

MGate 4101-MB-PBS Modbus Serial-to-PROFIBUS Slave Gateway User Manual

Version 6.3, December 2023

www.moxa.com/products



© 2023 Moxa Inc. All rights reserved.

MGate 4101-MB-PBS Modbus Serial-to-PROFIBUS Slave Gateway User Manual

The software described in this manual is furnished under a license agreement and may be used only in accordance with the terms of that agreement.

Copyright Notice

© 2023 Moxa Inc. All rights reserved.

Trademarks

The MOXA logo is a registered trademark of Moxa Inc.
All other trademarks or registered marks in this manual belong to their respective manufacturers.

Disclaimer

- Information in this document is subject to change without notice and does not represent a commitment on the part of Moxa.
- Moxa provides this document as is, without warranty of any kind, either expressed or implied, including, but not limited to, its particular purpose. Moxa reserves the right to make improvements and/or changes to this manual, or to the products and/or the programs described in this manual, at any time.
- Information provided in this manual is intended to be accurate and reliable. However, Moxa assumes no responsibility for its use, or for any infringements on the rights of third parties that may result from its use.
- This product might include unintentional technical or typographical errors. Changes are periodically made to the information herein to correct such errors, and these changes are incorporated into new editions of the publication.

Technical Support Contact Information

www.moxa.com/support

Table of Contents

1. Introduction	4
Overview	4
Package Checklist	4
Product Features	4
2. Getting Started	5
Connecting Power	5
Connecting PROFIBUS Devices	5
Connecting Modbus Serial Devices	5
Connecting to a Host via Serial Console Cable	5
3. Hardware	6
Power Input and Relay Output Pinouts	6
LED Indicators	6
Dimensions	6
Pin Assignments	7
Mounting the Unit	8
Specifications	8
Adjustable Pull High/Low Resistors for the Modbus Port (P1) in RS-485 Mode	9
Reset Button	9
Rotary Switch	10
4. Configuration	11
Installing the Software	11
Starting MGate Manager	14
Change Language Setting	15
Connecting to the Unit	16
Broadcast Search	16
Specify by IP Address	16
Connect through COM Port	16
Search	17
Modifying the Configuration	18
Configure Device	19
Configure Modbus Settings	20
Set Up PROFIBUS	21
IO Mapping Setup	22
Auto Mapping	28
QuickLink	29
Paging	30
Load Default	32
Monitoring Modbus Activity	33
Diagnose	36
Upgrading Firmware	38
Import/Export	39
Off-Line Configuration	43
A. Quick Configuration	45
Typical Applications	45
Quick Configuration Steps	46
PROFIBUS Overview	47
Modbus Overview	47
Diagnose Packet Format	49

1. Introduction

Welcome to the MGate 4101-MB-PBS line of Modbus to PROFIBUS gateways. All models feature easy protocol conversion from Modbus to PROFIBUS, and RS-232/422/485 ports for Modbus communication.

Overview

The MGate 4101-MB-PBS is a line of protocol gateways that provide users with the following features:

Protocol conversion between Modbus and PROFIBUS

MGate 4101-MB-PBS Series products can connect Modbus devices and PROFIBUS devices to provide PLCs (ex. Siemens S400, S300) with remote maintenance capability.

Windows utilities for easy setup and traffic monitoring

A Windows utility is provided to make configuration and operation of the MGate 4101-MB-PBS as easy as possible. The utility uses a serial console port to connect MGate 4101-MB-PBS unit. Besides, Wizard functions can help you finish configuration in only several minutes by automatic commands detection and automatic memory mapping.

Package Checklist

All models of the MGate 4101-MB-PBS Series are shipped with the following items:

Standard Accessories:

- 1 MGate 4101-MB-PBS Modbus Serial-to-PROFIBUS Slave Gateway.
- Quick Installation Guide (printed).
- Warranty card.
- RJ45 to DB9 cable (for console use)

Optional Accessories:

- **WK-36-02:** Wall mounting kit
- **Mini DB9F-to-TB Adapter:** DB9 female to terminal block adapter



NOTE

Notify your sales representative if any of the above items is missing or damaged.

Product Features

- Automatic Windows configuration utility
- Redundant dual DC power inputs
- Enhanced surge protection for serial and power
- 2 kV isolation for serial signals (-I model only)
- PROFIBUS connector to connect the gateway to the field bus
- Power-off warning by relay output
- Software-selectable RS-232/422/485 communication

2. Getting Started

Connecting Power

The unit can be powered using the AC adapter or by connecting a power source to the terminal block, depending on the model. The following instructions are for the AC adapter:

1. Plug the connector of the power adapter into the DC-IN jack on the back of the unit.
2. Plug the power adapter into an electrical outlet.

Follow these instructions to connect a power source to the terminal block:

1. Loosen or remove the screws on the terminal block.
2. Connect the 12–48 VDC power line to the terminal block.
3. Tighten the connections using the screws on the terminal block.

Note that the unit does not have an on/off switch. It automatically turns on when it receives power. The PWR LED on the top panel will glow to indicate that the unit is receiving power. For power terminal block pin assignments, please refer to the hardware reference chapter for your model.

Connecting PROFIBUS Devices

The unit's PROFIBUS port(s) are on the front panel. Use a PROFIBUS cable to directly connect the unit to a PROFIBUS PLC or other PROFIBUS master.

For the PROFIBUS port pin assignments, please refer to Chapter 3. This information can then be used to construct your own PROFIBUS cable.

Connecting Modbus Serial Devices

The unit's Modbus port(s) are on the front panel. Use a Modbus cable to directly connect the unit to a Modbus RTU/ASCII device.

For the Modbus port pin assignments, please refer to Chapter 3. This information can then be used to construct your own Modbus cable.

Connecting to a Host via Serial Console Cable

A RS-232 serial console port is on the unit's front panel. This port is used for console configuration via a CBL-RJ45-F9-150 RJ-45-to-DB9 cable.

For normal operation, use a standard straight-through RS-232 serial cable to connect the unit to your COM port. You connect the unit directly to a PC. Besides, use a serial cable to connect the unit to your PC's serial connector.

The Tx/Rx LED of the console port will light up to indicate serial connection status when data is communicated with each other.

3. Hardware

Power Input and Relay Output Pinouts

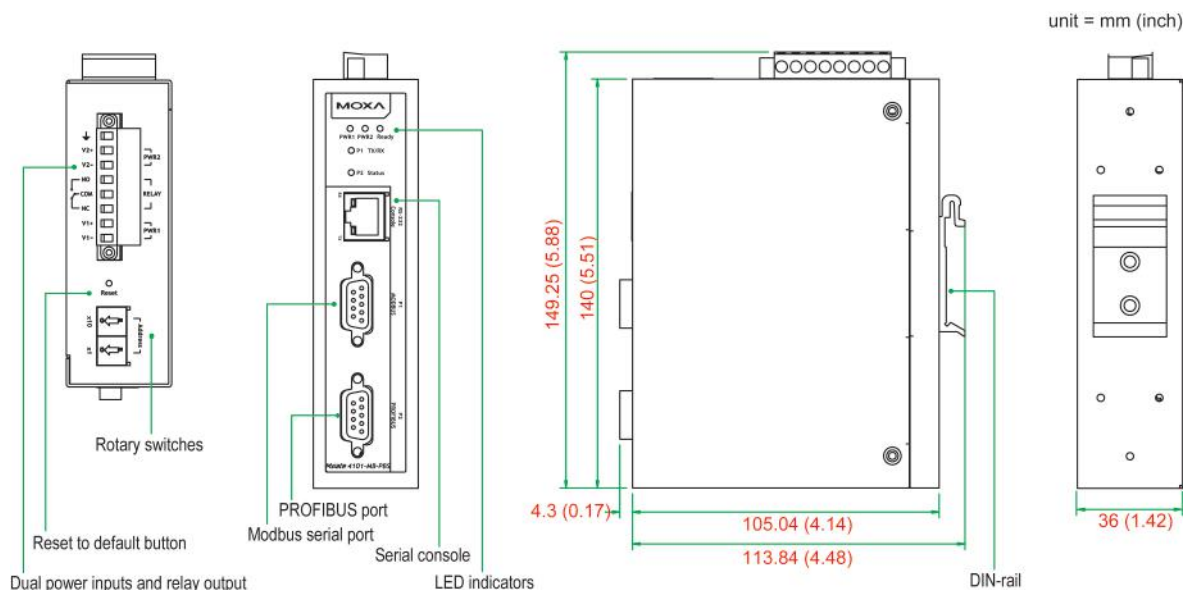


	V2+	V2-				V1+	V1-
Shielded Ground	DC Power Input 2	DC Power Input 2	N.O.	Common	N.C.	DC Power Input 1	DC Power Input 1

LED Indicators

LED	Color	Function
PWR1	Green	Power is on.
	Off	Power is off.
PWR2	Green	Power is on.
	Off	Power is off.
Ready	Green	Gateway is operational.
	Red	Gateway has wrong settings.
	Off	Power is off or fault condition exists.
P1 Tx/Rx (Modbus Serial)	Green	Serial device is transmitting data.
	Orange	Serial device is receiving data.
	Off	No data is flowing to or from the serial port.
P2 Status (PROFIBUS)	Green	Steady: Data is exchanging
	Red	Steady: Baudrate automatically identified. Wrong slave address or CHK_PRM, or CHK_CFG will remain steady red
	Off	PROFIBUS offline

Dimensions

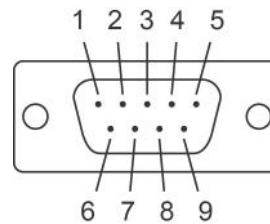


Pin Assignments

Modbus P1 Pin Assignment

The MGate 4101-MB-PBS Series uses DB9 (male) serial port to connect to Modbus devices.

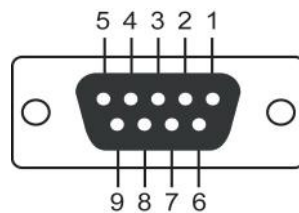
Pin	RS-232	RS-422/ RS-485 (4W)	RS-485 (2W)
1	DCD	TxD-(A)	-
2	RXD	TxD+(B)	-
3	TXD	RxD+(B)	Data+(B)
4	DTR	RxD-(A)	Data-(A)
5	GND	GND	GND
6	DSR	-	-
7	RTS	-	-
8	CTS	-	-
9	-	-	-



PROFIBUS P2 Pin Assignment

The MGate 4101-MB-PBS Series uses DB9 (female) serial port to connect to PROFIBUS devices.

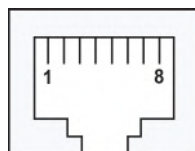
PIN	Signal Name
1	N.C.
2	N.C.
3	PROFIBUS D+
4	RTS
5	Signal common
6	5V
7	N.C.
8	PROFIBUS D-
9	N.C.



Console (RS-232) Pin Assignment

The MGate 4101-MB-PBS Series uses RJ45 serial port to connect to PC to configure device.

PIN	RS-232
1	DTR
2	RTS
3	GND
4	TXD
5	RXD
6	DCD
7	CTS
8	DTR

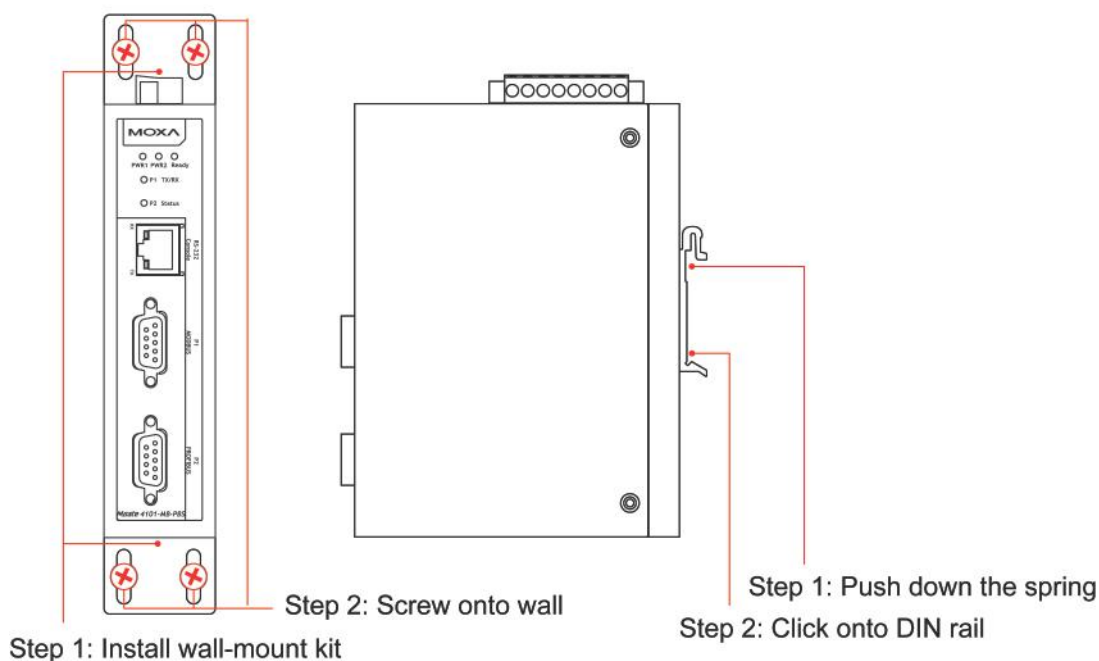


Mounting the Unit

The unit can be mounted on the wall or on a DIN-rail. The MGate 4101-MB-PBS/4101I-MB-PBS Series is designed to be attached to a DIN-rail or mounted on a wall. For DIN-rail mounting, push down the spring and properly attach it to the DIN-rail until it "snaps" into place. For wall mounting, install the wall mount kit (optional) first, and then screw the device onto the wall. The following figure illustrates the two mounting options:

Wall-Mount Installation

DIN-Rail Installation



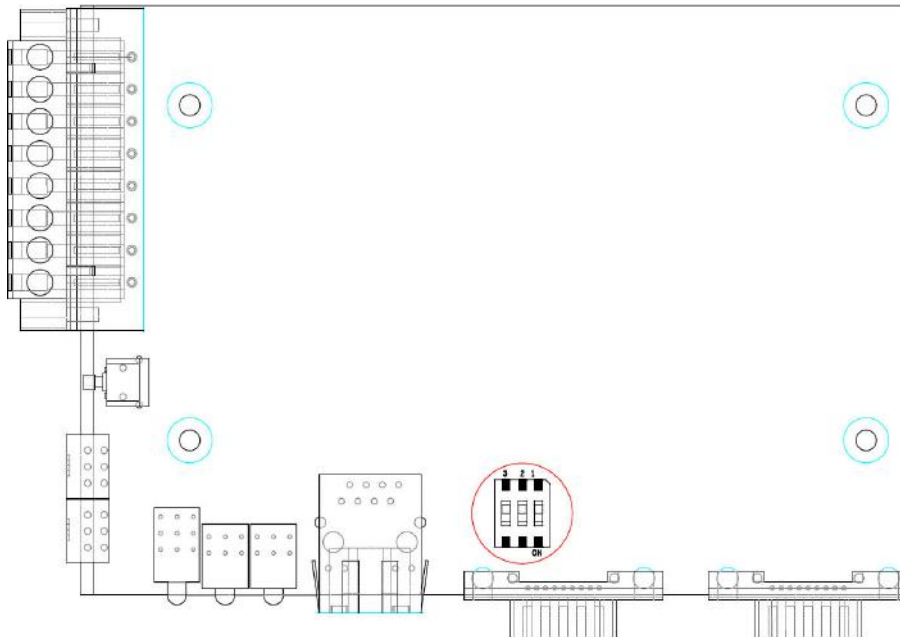
Specifications



NOTE

The latest specifications for Moxa's products can be found at <https://www.moxa.com>.

Adjustable Pull High/Low Resistors for the Modbus Port (P1) in RS-485 Mode



SW	1	2	3
	Pull High	Pull Low	Terminator
ON	1 K Ω	1 K Ω	120 Ω
Default OFF	150 K Ω	150 K Ω	–

In some critical environments, you may need to add termination resistors to prevent the reflection of serial signals. When using termination resistors, it is important to set the pull high/low resistors correctly so that the electrical signal is not corrupted. The MGate uses jumper settings or DIP switches to set the pull high/low resistor values for each serial port.

To set the pull high/low resistors to 150 K Ω , make sure that the two jumpers assigned to the serial port are not shorted by jumper caps. This is the default setting.

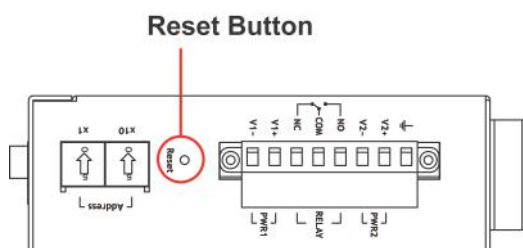
To set the pull high/low resistors to 1 K Ω , make sure that the two jumpers assigned to the serial port are shorted by jumper caps.



ATTENTION

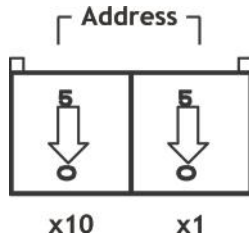
Do not use the 1 K Ω setting on the MGate when using the RS-232 interface. Doing so will degrade the RS-232 signals and shorten the maximum allowed communication distance.

Reset Button



To reset the MGate to the factory default settings, hold down the reset button for about 5 seconds. The MGate will restart and be reset to factory default settings.

Rotary Switch



Before communication, you must assign a slave ID to the PROFIBUS slave. If you would like to assign an address between 0 to 99, you need to change the rotary switch to the desired address. If you would like to assign an address which is over 99, you must set it in the MGate utility.

4. Configuration

Installing the Software

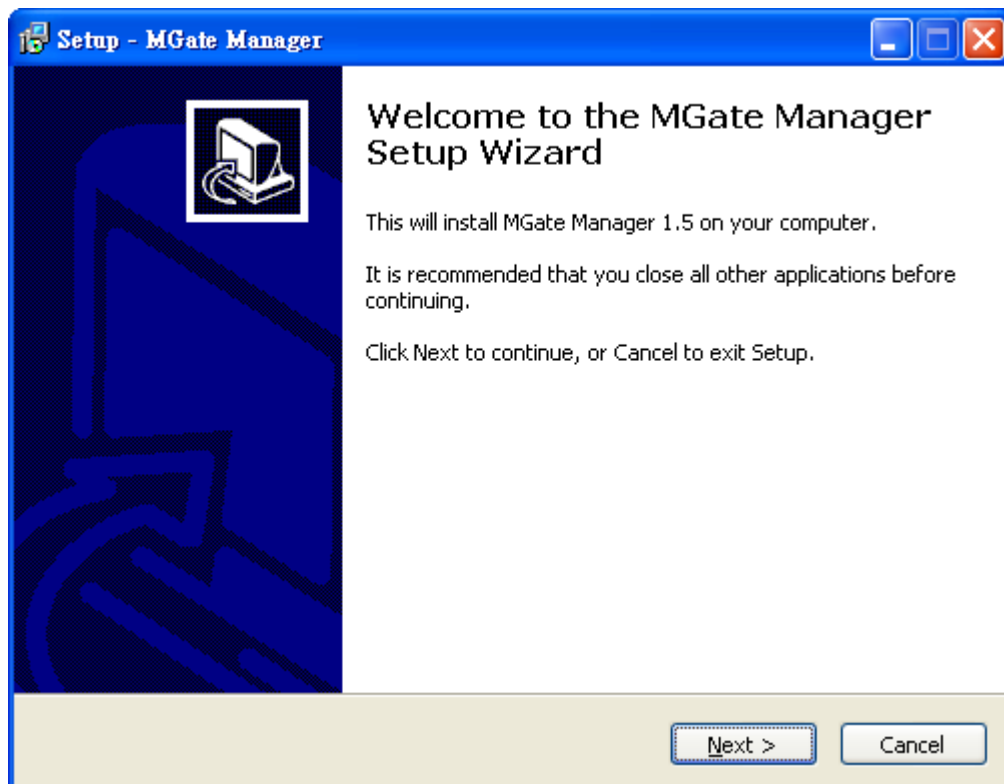
The following instructions explain how to install MGate Manager, a utility for configuring and monitoring MGate 4101-MB-PBS units over the network.

1. Please download the MGate Manager software from Moxa's website at <http://www.moxa.com>. Then, locate and run the following setup program to begin the installation process:

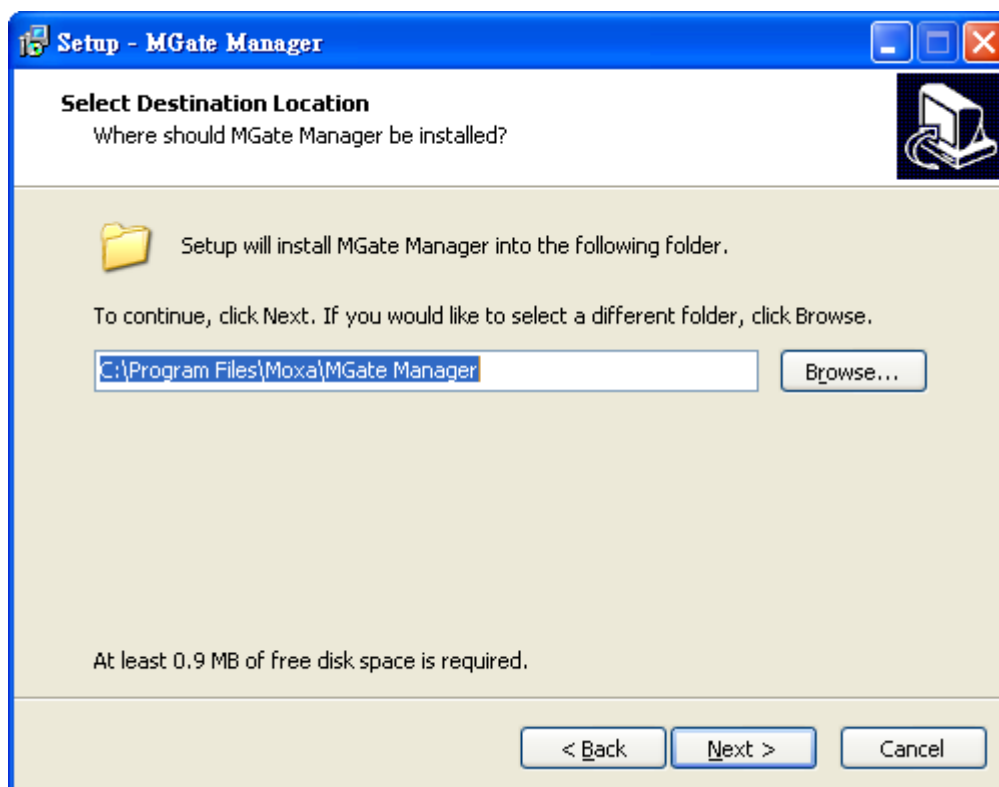
MGM_Setup_[Version]_Build_[DateTime].exe

(The latest version could have the following format: MGM_Setup_Verx.x.x_Build_xxxxxxx.exe.)

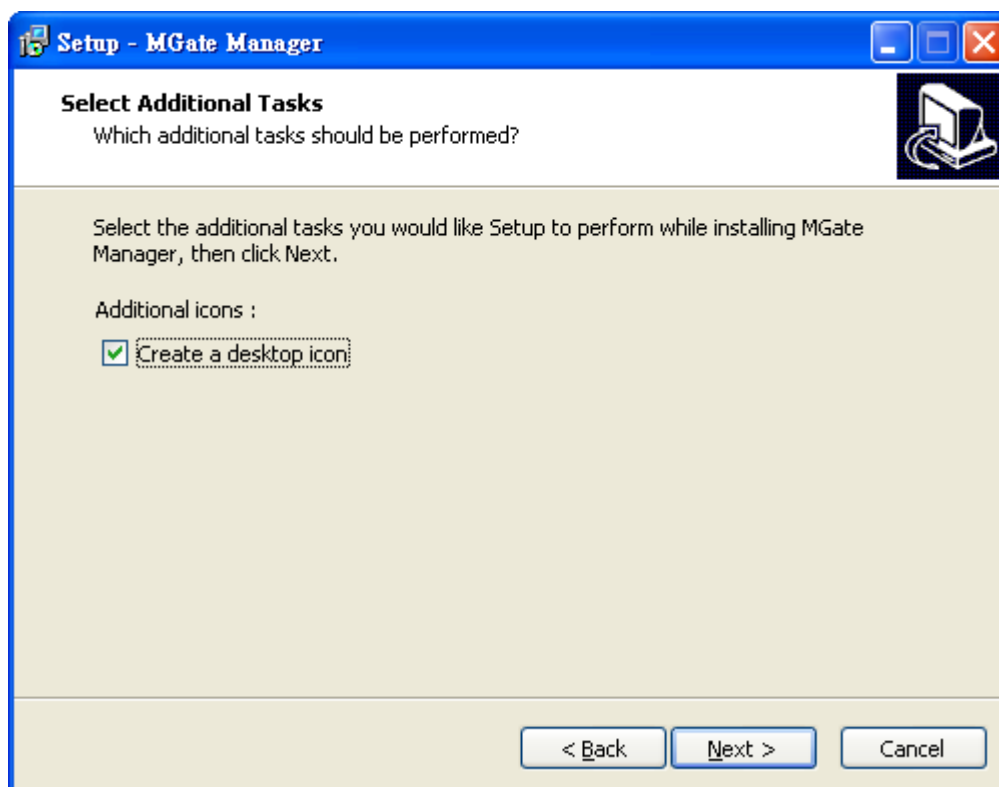
2. You will be greeted by the Welcome window. Click Next to continue.



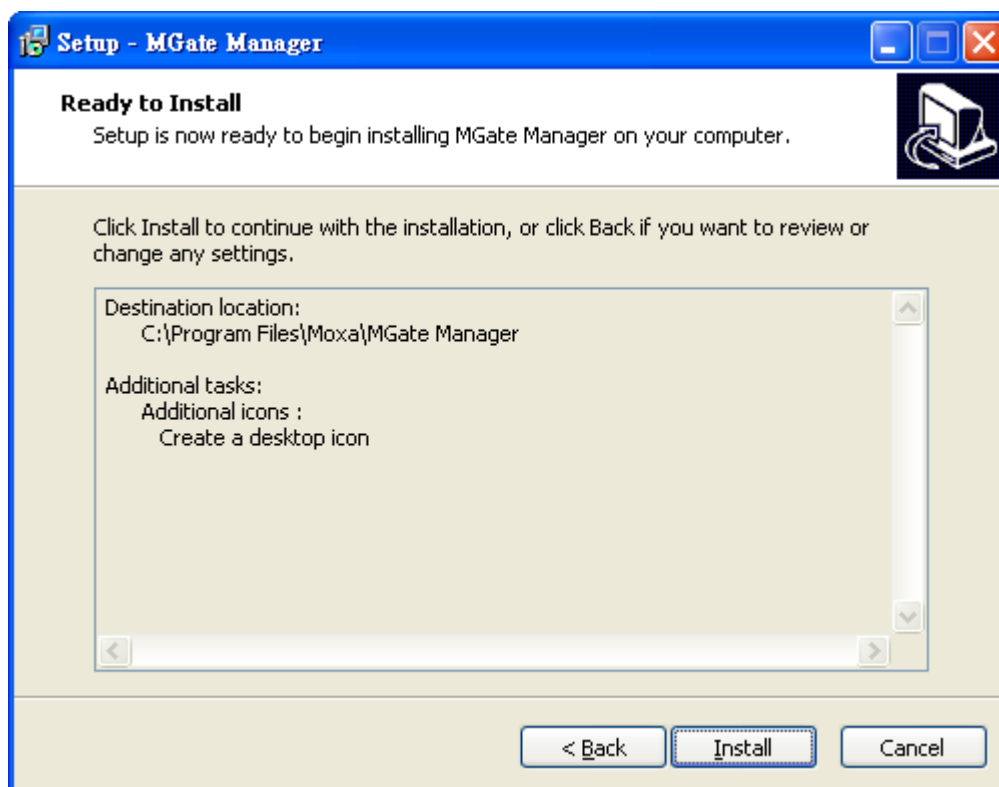
- When the Select Destination Location window appears, click Next to continue. You may change the destination directory by first clicking on Browse.



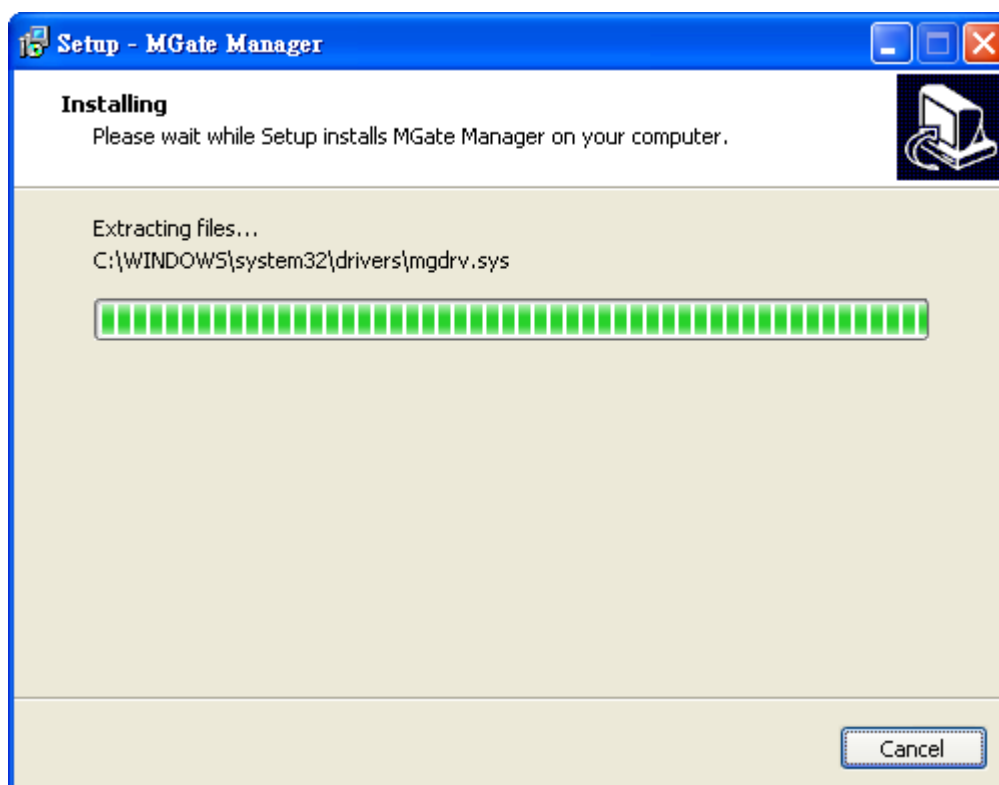
- When the Select Additional Tasks window appears, click Next to continue. You may select Create a desktop icon if you would like a shortcut to MGate Manager on your desktop.



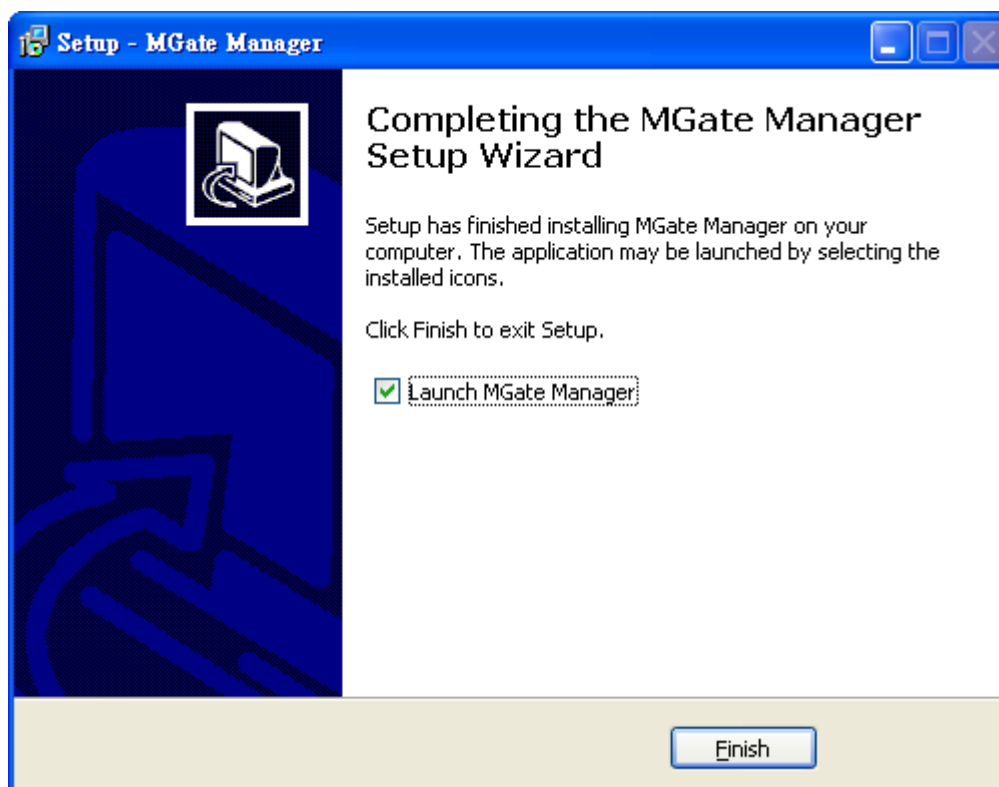
5. Click **Next** to start copying the software files.



6. A progress bar will appear. The procedure should take only a few seconds to complete.



7. A message will indicate that MGate Manager is successfully installed. You may choose to run it immediately by selecting Launch MGate Manager.

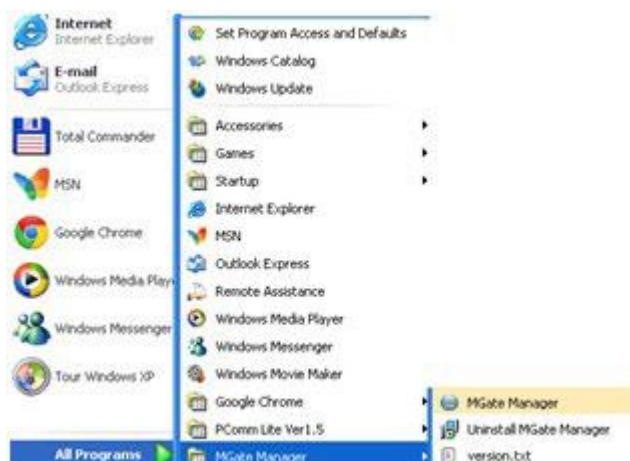


Starting MGate Manager

MGate Manager is a Windows-based utility that is used to configure the MGate 4101-MB-PBS.

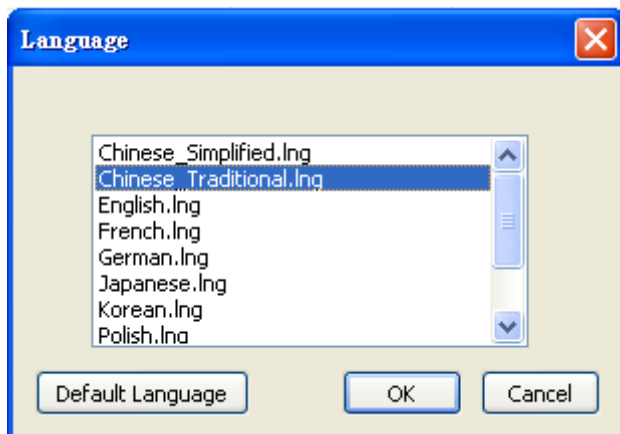
Before running MGate Manager, make sure that the MGate 4101-MB-PBS is connected to your PC. Please refer to Chapter 2 for more details.

You may open MGate Manager from the Windows Start menu by clicking **Start > Programs > MGate Manager > MGate Manager**. The MGate Manager window should appear as shown below.

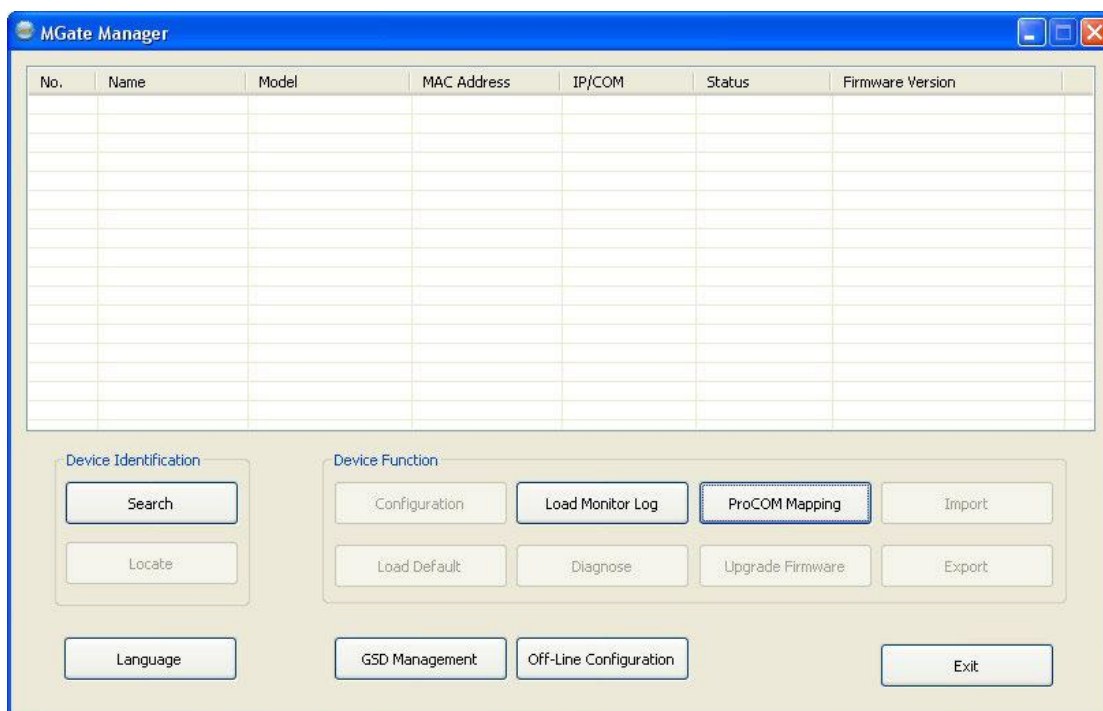


Change Language Setting

If you wish to run MGate Manager in a different language, you may click **Language** to change the language setting. A dialog box showing the available languages should appear, as shown below.



When you click **OK**, MGate Manager will immediately reflect on your chosen language.



After changing to a different language, you find that all strings on MGate Manager are replaced in your chosen language. For example, the above picture is shown in English. However, no matter what language you choose, it won't change the label on the language button.



ATTENTION

Set your MGate Manager to **"Default Language"** before contacting Moxa Technical Support.

With support for multiple languages, MGate Manager is more user-friendly and accessible. However, if you need assistance from Moxa Technical Support, please change the language to "Default Language". This will prevent any misunderstandings or confusion about MGate Manager menu items and commands as our engineers assist you.

The default language is English and will only be active for the current MGate Manager session. When you open MGate Manager again, the language will revert to your original setting.

Connecting to the Unit

Prior to configuration, MGate Manager must be connected to its unit. There are three methods to establish connection. Broadcast Search locates the MGate Series on the LAN. Search by IP attempts to connect to a specific unit by IP address, which is useful if the unit is located outside the LAN or can only be accessed by going through a router. Connect through COM port tries to connect to a separate unit via a RS-232 serial COM port.

Broadcast Search

Broadcast Search is used for MGate Ethernet Gateways, such as the MGate MB3000 and MGate EIP3000 Series, which are discovered via Ethernet by using broadcast IP. In addition, whenever you add an MGate 4101-MB-PBS via serial console, MGate Manager will automatically record the COM port(s) for the broadcast to search as well. Note that restarting MGate Manager will erase the COM port(s) record.

Specify by IP Address

Specify by IP Address is used for MGate Ethernet Gateways, such as the MGate MB3000 and MGate EIP3000 Series, which are discovered via Ethernet by using a specific IP address. Click **Specify by IP Address** if you know the IP address of the unit and wish to connect to it directly.



ATTENTION

If Search by IP Address fails to locate the MGate MB3000 or MGate EIP3000 Series, the IP address that you entered might be incorrect. Try doing the search again and re-entering the IP address carefully.

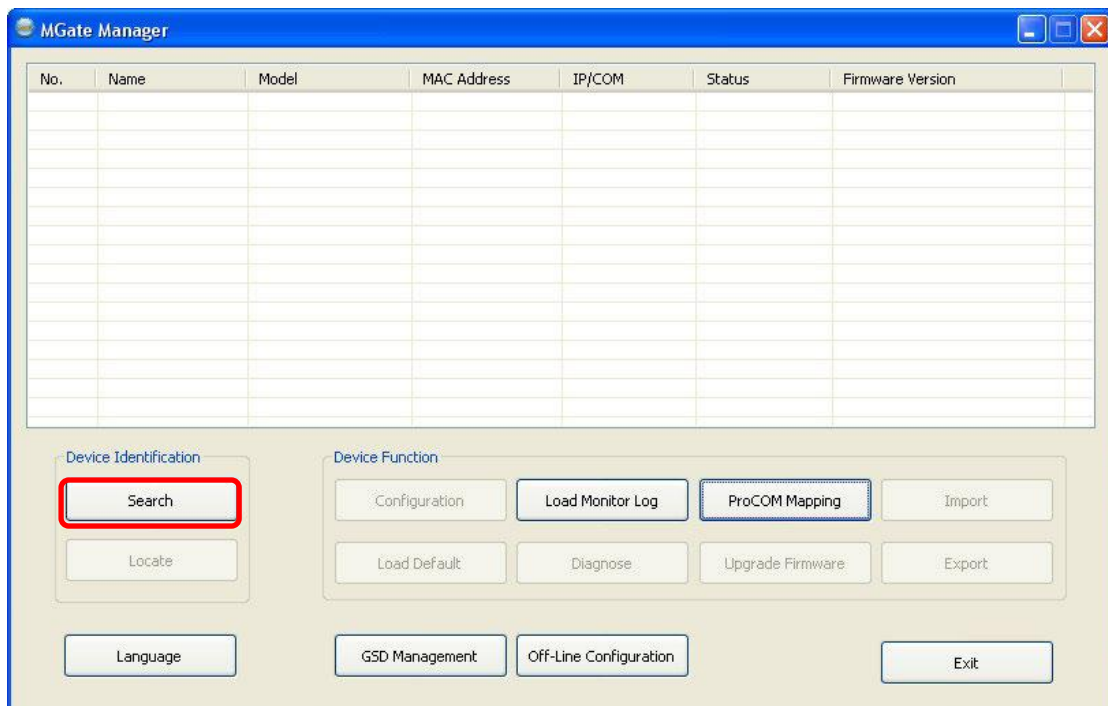
Another possibility is that the MGate MB3000 or MGate EIP3000 Series is on the same LAN as your PC, but on a different subnet. In this case, you can modify your PC's IP address and or netmask so that it is on the same subnet as the MGate MB3000 or MGate EIP3000 Series. After your PC and the MGate MB3000 or MGate EIP3000 Series are on the same subnet, MGate Manager should be able to find the unit.

Connect through COM Port

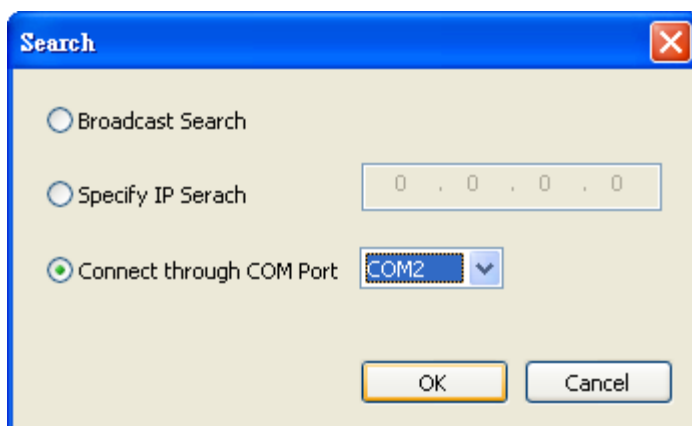
Connect through COM Port is used for MGate PROFIBUS Gateways, such as the MGate 4101-MB-PBS Series, which are discovered via RS-232 serial COM Port. Click **Connect through COM Port** if you know the COM port number of the unit.

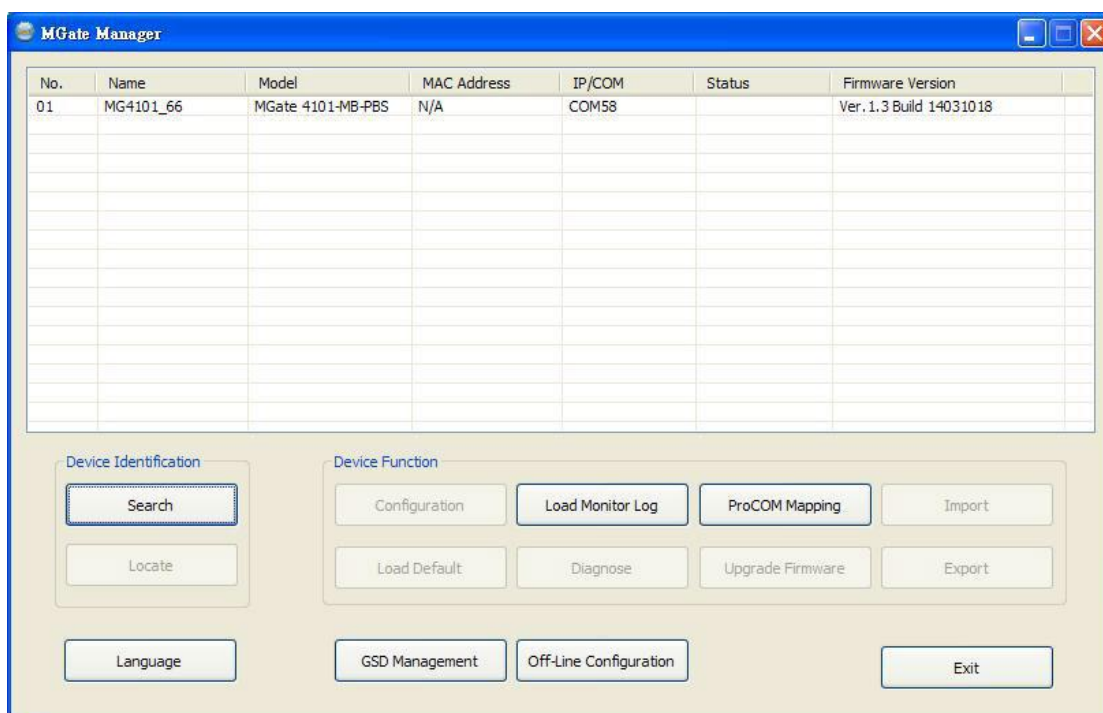
Search

Click **Search** to search the serial console for the MGate 4101-MB-PBS units.



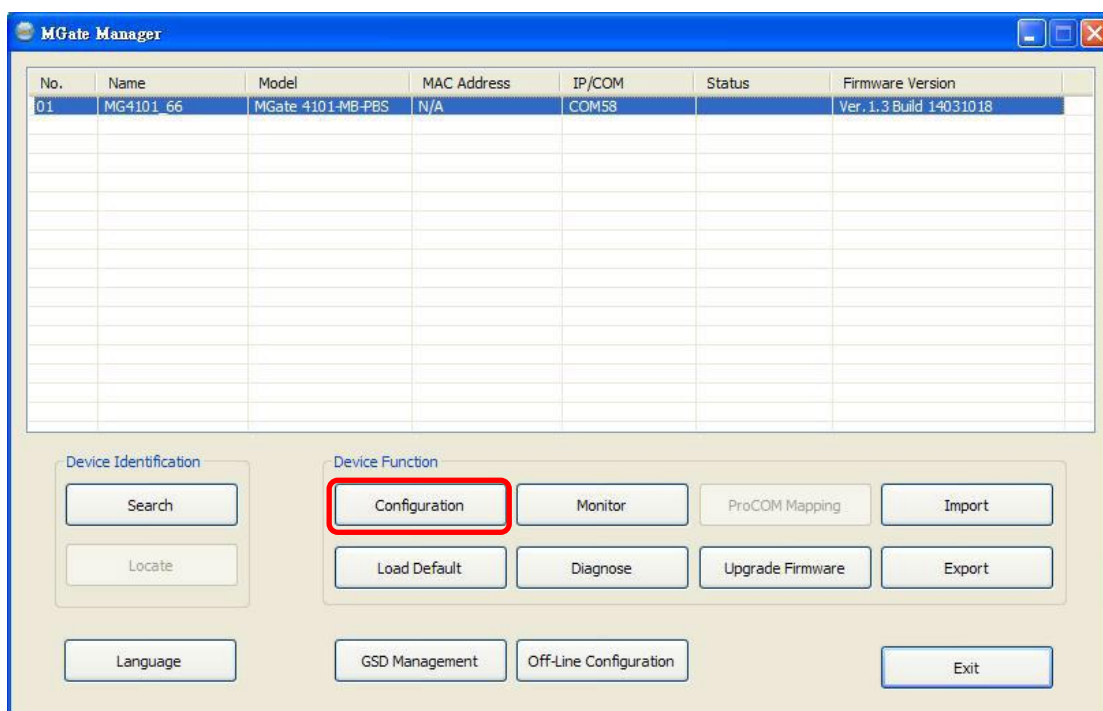
A dialog box will appear. Click **Connect through COM Port** and choose which COM port is used to connect to MGate 4101-MB-PBS.





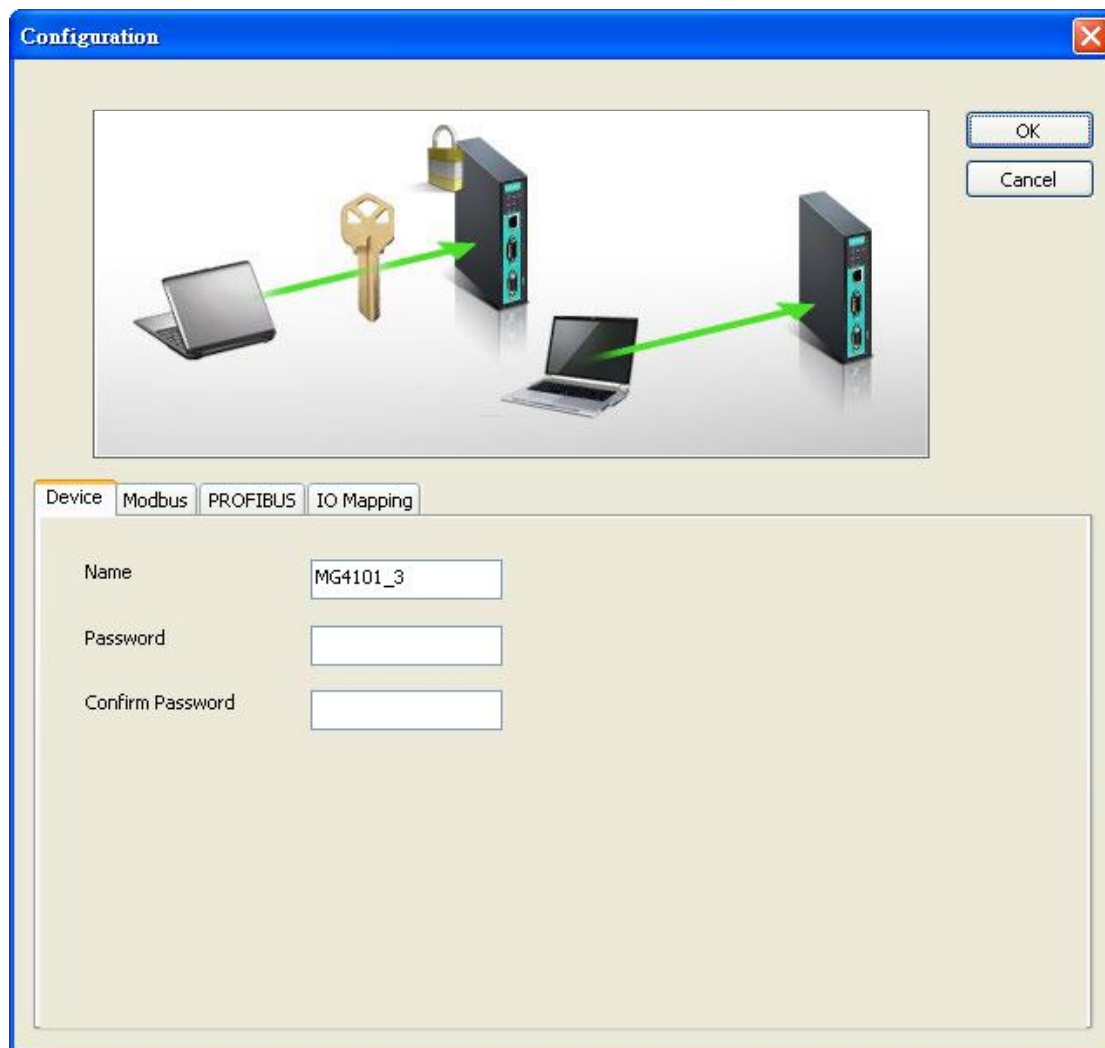
Modifying the Configuration

Once your unit is displayed in MGate Manager, select it by clicking on it. The Configuration button will become available. Click Configuration to open the configuration window.



Configure Device

In first page, you can change device name and select a password to protect the unit from unauthorized access.



Parameter	Value	Notes
Name	(an alphanumeric string)	You can enter a name to help you identify the unit, such as the location, function, etc.
Password	(an alphanumeric string)	You can set a password to prevent unauthorized users from configuring the unit. The password will be required when anyone attempts to configure the unit over the network. Modbus operation is not affected by the password.
Confirm password	(an alphanumeric string)	Re-type the password again for confirmation.



ATTENTION

To erase an existing password, leave both the New Password and Confirm Password text input boxes blank. The password will be erased when you click OK in the bottom right corner.

Configure Modbus Settings

The Serial tab is where Modbus serial port's communication parameters are configured. You can configure Baud Rate, Parity, Stop Bit, Flow Control, FIFO, and Interface Mode.

Configuration

Master PLC, Slave MGate 4101, Master MGate 4101, Slave Meter, RTU/ASCII

Device Modbus PROFIBUS I/O Mapping

Mode

- ☐ RTU Slave Mode
- ☒ RTU Master Mode
- ☐ ASCII Slave Mode
- ☐ ASCII Master Mode

Serial Port

Baudrate: 115200

Parity: Even

Data bits: 8

Stop bit: 1

Flow Control: None

FIFO: Enable

Interface: RS232

Protocol

Slave ID: 1

Response Time-out (ms): 1000

Max. Retry: 3

Modbus Register Start Address: 0

OK Cancel

Mode	Description
RTU Master	Modbus RTU server(s)/slave(s) will be connected to the serial port
RTU Slave	A Modbus RTU client/master will be connected to the serial port
ASCII Master	Modbus ASCII server(s)/slave(s) will be connected to the serial port
ASCII Slave	A Modbus ASCII client/master will be connected to the serial port

Serial Port	Description
Baud Rate	Supports standard baudrates (bps): 50/75/110/134/150/300/600/1200/1800/2400/4800/7200/9600/19200/38400/57600/115200/230.4k/460.8k/921.6k
Parity	None, Odd, Even, Mark, Space
Data Bits	8
Stop Bits	1, 2
Flow Control	None, DTR/DSR, RTS/CTS
FIFO	Enable, Disable
Interface	RS-232, RS-422, RS-485 2-wire, RS-485 4-wire

Protocol	Description
Slave ID	Slave mode only, Modbus server/slave identification number of the MGate 4101-MB-PBS
Response Time-out (ms)	Master mode only, the time client/master will wait for a response after sending a request. See detailed description below.
Max. Retry	Master mode only, the number of times the client/master will retry the same request when response time out.
Modbus Register Start Address	Slave mode only. Set the Modbus register start address, the default value is 0. A warning message will show up in the I/O Mapping if the mapping register address or coil address exceeds 65535. Paging feature also using this parameter to calculate the register/coil address.

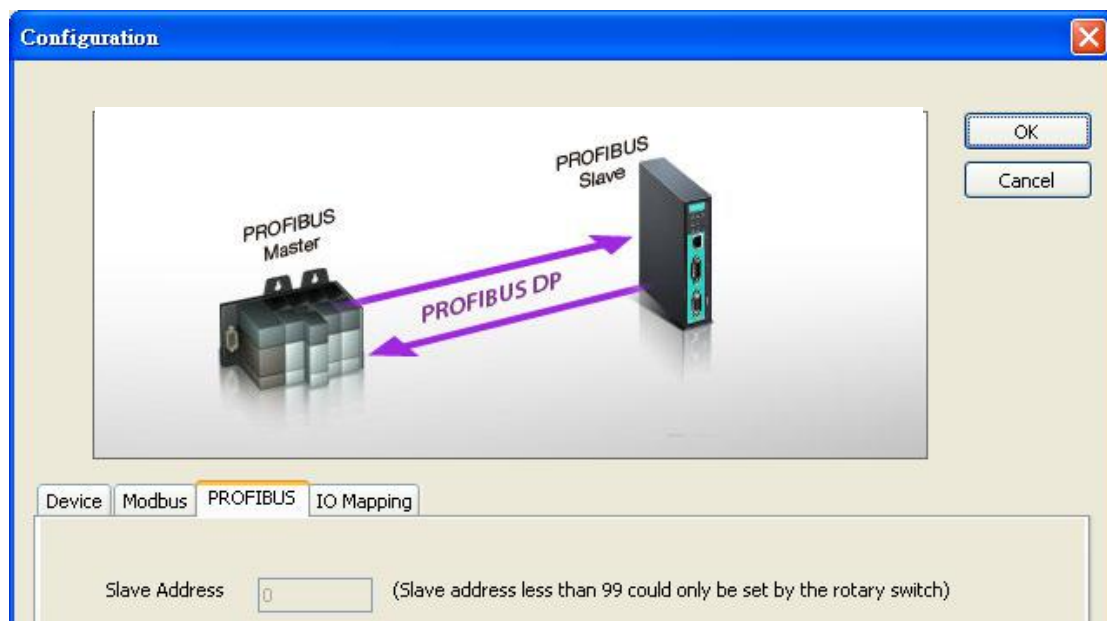
Response Time-out

According to the Modbus standard, the time that it takes for a server/slave device to respond to a request is defined by the device manufacturer (please refer to Appendix A of MGate MB3000 Series User Manual for details). Based on this response time, a client/master can be configured to wait a certain amount of time for a server/slave's response. If no response is received within the specified time, the client/master will disregard the request and continue operation. This allows the Modbus system to continue operation even if a server/slave device is disconnected or faulty.

On the MGate 4101-MB-PBS, the "Response Time-out" field is used to configure how long the gateway will wait for a response from a Modbus ASCII or RTU server/slave. Please refer to your device manufacturer's documentation to manually set the response time-out.

Set Up PROFIBUS

Every PROFIBUS slave device should be assigned a unique address in the same field. If the address you would assign is lower than 99, please use the rotary switches (decimal) on the top of device. If the address you would assign is higher than 99, please set the rotary switches as 99 and **Slave Address** field will be enabled for setting the designated address.

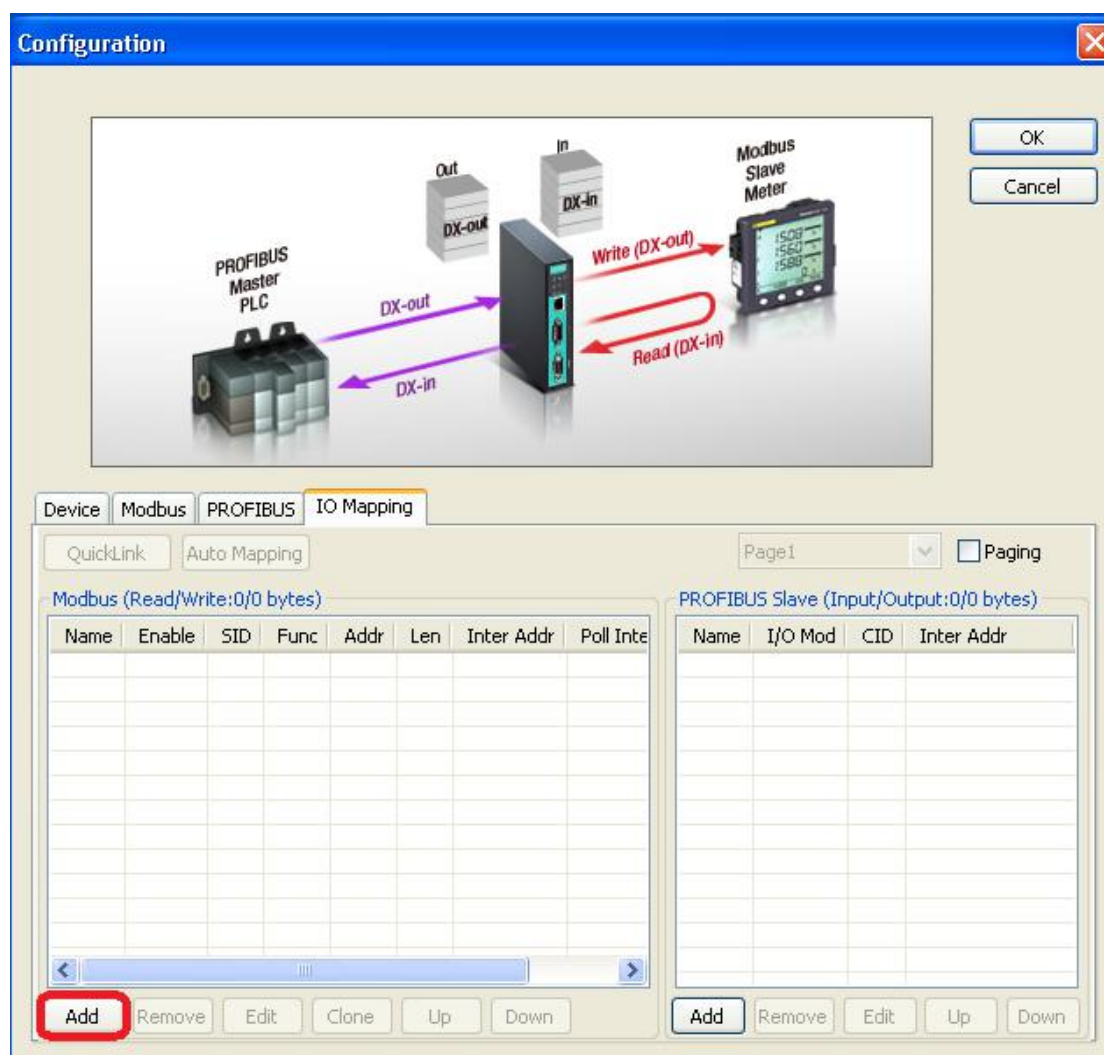


PROFIBUS	Description
Slave Address	Before communication, you must assign a slave ID to the PROFIBUS slave, If you would like to assign an address between 0-99, you need to change the rotary switch to the desired address. If you would like to assign an address which is over 99, you must set it in the MGate utility. If you would like to use a slave address which is over 99, set the rotary switch to "99" and then use MGate Manager to configure the desired address.

Refer to chapter 3 for instructions on how to set the slave address using a rotary switch.

IO Mapping Setup

In this page, define all commands that Modbus uses and all I/O modules PROFIBUS slave provides.



If you choose MGate 4101-MB-PBS as Modbus Client/Master, designate all Modbus Read or Write requests in the table on the left.

Click **Add** to create each Modbus request.

Each Modbus request includes Name, Enable, Modbus slave ID, Function Code, Address, Length, Internal Address, Poll Interval, Swap, Fault Protection, Fault Timeout. Please refer to datasheets or manuals of Modbus server/slave devices to fill out these fields.

Parameter	Description
Name	Enter a name to help identify the command, such as the location, function, etc.
Enable	The Enable for the transaction: Disable: The transaction is never sent Cyclic: The transaction is sent cyclically at the interval specified in the "Poll Interval" parameter. Data change: The data area is polled for changes at the time interval defined by Poll Interval. A transaction is issued when a change in data is detected.
Slave ID	The Modbus slave id that this server/slave module will accept. 0: Broadcasting 1-255: Device specific

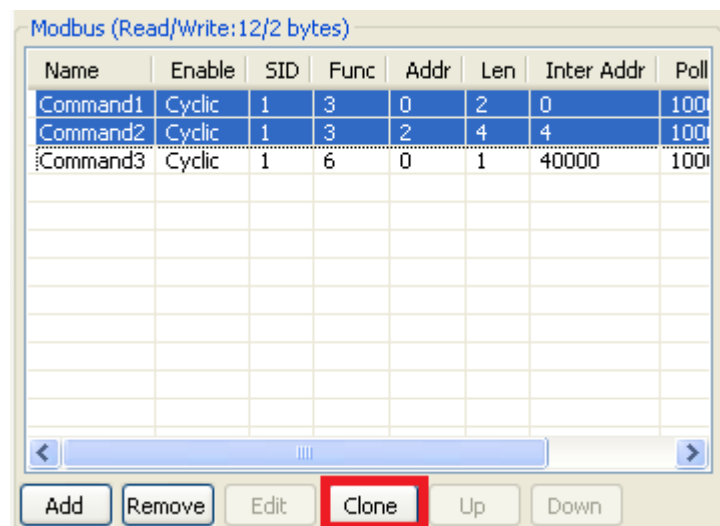
Parameter	Description
Function Code	When a message is sent from a Client to a Server device the function code field tells the server what kind of action to perform. We support the following function code by far: 01: Read coils 02: Read discrete inputs 03: Read holding registers 04: Read input register 05: Write single coil 06: Write single register 15: Write multiple coils 16: Write multiple registers
Address	Station Address. The range is from 0 to 65535
Length	Specifying the quantities to read or write. The range for coil is from 1 to 1952, and for register from 1 to 122.
Internal Address	This parameter specifies the location of the trigger byte in internal memory. The range is from 0 to 243.
Poll Interval (ms)	Polling interval in millisecond, since the module sends all requests in turns, the actual polling interval also depends on the number of requests in the queue and their parameters. The range is from 10 to 1200000.
Swap	Data Byte Swapping None: Don't need to swap Byte: 0x0A, 0x0B, 0x0C, 0x0D becomes 0x0D, 0x0C, 0x0B, 0x0A. Word: 0x0A, 0x0B, 0x0C, 0x0D becomes 0x0C, 0x0D, 0x0A, 0x0B. ByteWord: 0x0A, 0x0B, 0x0C, 0x0D becomes 0x0D, 0x0C, 0x0B, 0x0A. There are two phases in changing ByteWord 1). 0x0A, 0x0B, 0x0C, 0x0D becomes 0x0B, 0x0A, 0x0D, 0x0C. 2). 0x0B, 0x0A, 0x0D, 0x0C becomes 0x0D, 0x0C, 0x0B, 0x0A.
Fault Protection	For the Modbus RTU master mode, the opposite side refers to the PROFIBUS side. The Modbus write command is sent from the PROFIBUS. Once the PROFIBUS connection fails, the gateway will not be able to receive the PROFIBUS command, but the gateway will continuously send Modbus write commands to the Modbus RTU server/slave device. To avoid problems when the PROFIBUS side fails, the MGate 4101 can be configured to react in one of three ways: keep latest data, clear data to zero, and user-defined value.
Fault Timeout	Defines the communication timeout for the PROFIBUS side. The range is from 0 to 65535 ms. (the default setting is 60000 ms.)

Fault Protection

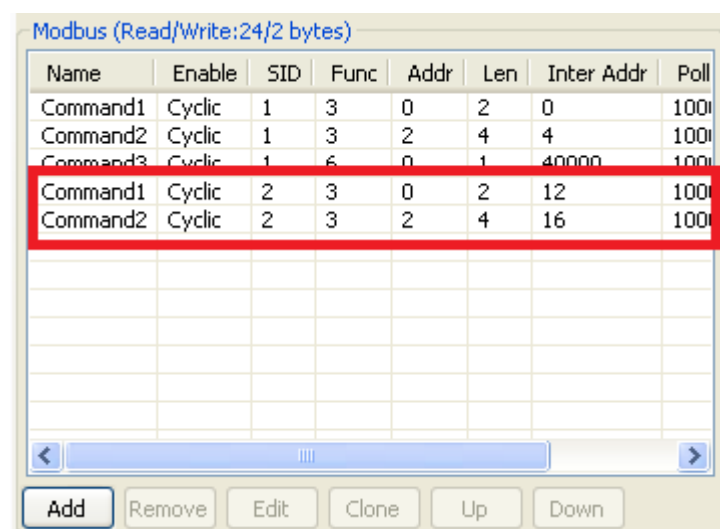
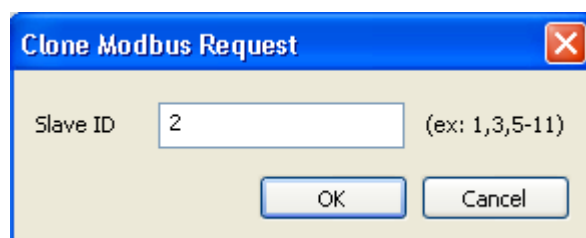
The Fault Protection function sends a predefined setting to field devices to prevent incorrect actions when an upstream connection is lost. You can configure the criteria used to determine what to do when the write command is no longer received from the PROFIBUS side. For example, when a PROFIBUS cable comes loose accidentally, the most up-to-date write command from the PROFIBUS side will not be received by the gateway. Hence, the Modbus client/master will continuously send Modbus write commands to the server/slave device, which is now out-of-date, creating an inconsistency between the PROFIBUS and Modbus sides. To avoid this problem, the MGate 4101 supports options to determine which actions should be taken when the PROFIBUS side is disconnected from the gateway.

Options	Description
Keep latest data	The gateway will write the same data to the server/slave device.
Clear data to zero	The gateway will write zero values to the server/slave device.
User-defined value	A user-defined value will be written to the server/slave device.

After adding a command, you find out that many similar commands with different slave IDs need to be configured. You can choose (Ctrl + click-left) desired commands and press Clone to duplicate commands.



Then, a dialog box that is used to set the desired Slave ID will appear. The Slave ID range could be set and then click **OK** to produce commands.



After all Modbus requests finish, all the data collected from Modbus should be mapped to PROFIBUS I/O modules for the PROFIBUS Master to use.

Click **Add** to create each PROFIBUS I/O module in the table on the right.

The screenshot shows the 'IO Mapping' window with two tabs: 'Modbus' and 'PROFIBUS'. The 'Modbus' tab is active, showing a table with columns: Name, Enable, SID, Func, Addr, Len, Inter A..., and Poll. The table contains three rows: Command1, Command2, and Command3. The 'PROFIBUS Slave' tab is also visible, showing a table with columns: Name, I/O Mod, CID, and Inter Addr. The 'Add' button in the PROFIBUS Slave table is highlighted with a red box.

Then, a dialog which is used to set up the IO module will appear. Please adjust the parameters that correspond with the Modbus requests you set before. Click **OK** to record this IO module.

The screenshot shows the 'PROFIBUS IO Module' dialog box. It has four input fields: Name, I/O Type (set to Input), Data Type (set to Word), and Data Length (set to 1). There are OK and Cancel buttons at the bottom.

Parameter	Description
Name	Enter a name to help identify the module, such as the location, function, etc.
I/O Type	Input: Used to map into input memory Output: Used to map into output memory
Data Type	The data type for this IO module
Data Length	The data length for this IO module. The range is from 1 to 64.

Name	I/O Mod	CID	Inter Addr
Input1	Input:6 words	0x55	0

Add
 Remove
 Edit
 Up
 Down

If you would like to check if the I/O map is totally correct, you could click **PROFIBUS I/O module** that will show what Modbus commands are included in the table on the right. After finishing the configuration, MGate 4101-MB-PBS can communicate between the PROFIBUS and Modbus protocols.

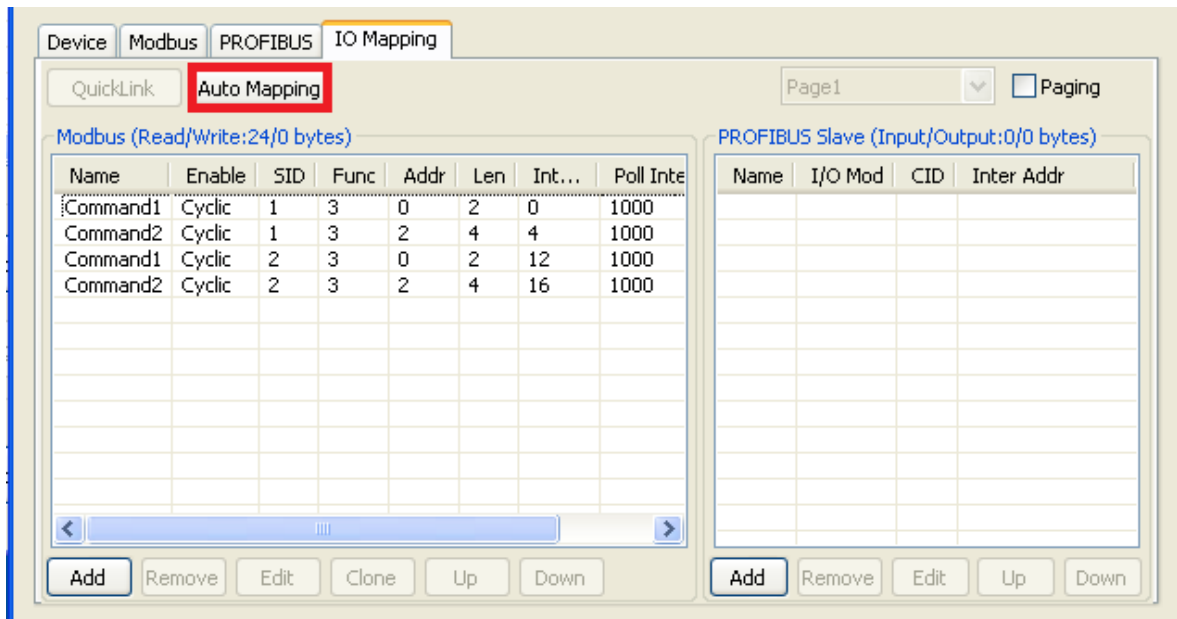
[illegible]

NOTE

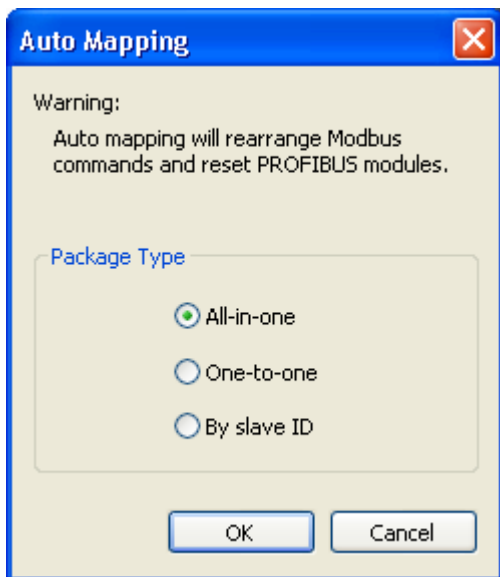
Each "Name" of the commands must be mapped, that is, the commands in Modbus will correspond with the I/O module in PROFIBUS.

Auto Mapping

Auto Mapping is a useful function that can help you map Modbus commands to PROFIBUS I/O modules easily. This function is for Modbus master mode only. Typically, users need to spend lots of time in setting I/O modules. By using the Auto Mapping function, it will map Modbus commands to PROFIBUS I/O modules automatically. You can map it in one of three ways: All-in-one, One-to-one, or by Slave ID.



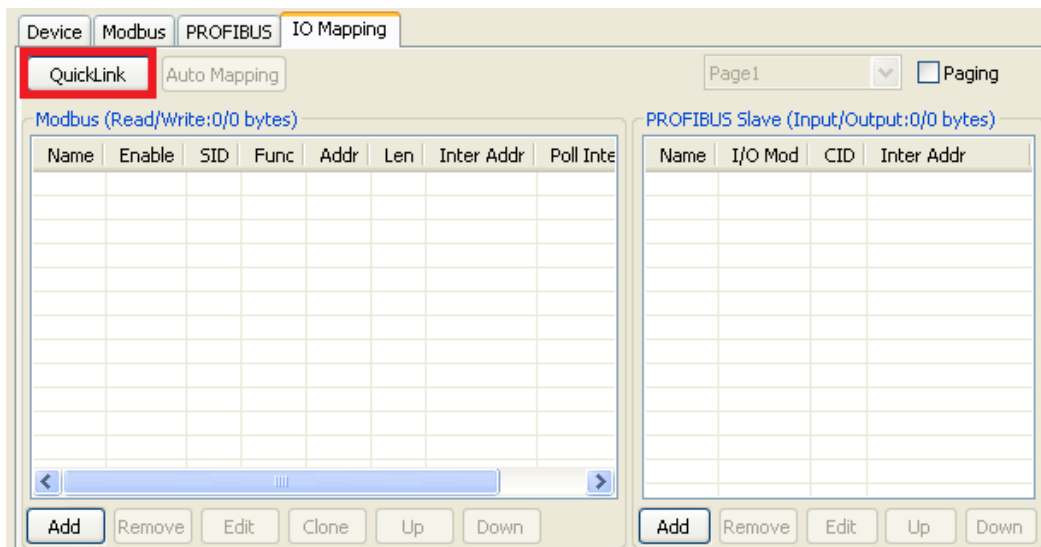
Click the **Auto Mapping** function. Then, a dialog box that is used to select the package types will appear. Please select one of them to map Modbus commands. Click **OK** to produce PROFIBUS I/O modules.



Package Type	Description
All-in-one	Combine all the Modbus read/write commands to PROFIBUS one input/output module respectively.
One-to-one	Combine each Modbus read/write command to PROFIBUS each input/output module respectively.
By slave ID	Combine Modbus read/write commands by slave ID to PROFIBUS input/output modules respectively.

QuickLink

The QuickLink is an innovative function to let you configure more quickly and easily. Typically, most PROFIBUS users must spend a lot of time to set up Modbus commands in a PROFIBUS application. By using the QuickLink function, the MGate 4101-MB-PBS will learn Modbus requests automatically to save time in deployment. However, the function is only enabled in Modbus master mode. (Please refer to the Typical Application in the Appendix for more details). Start QuickLink by clicking the **QuickLink** button.

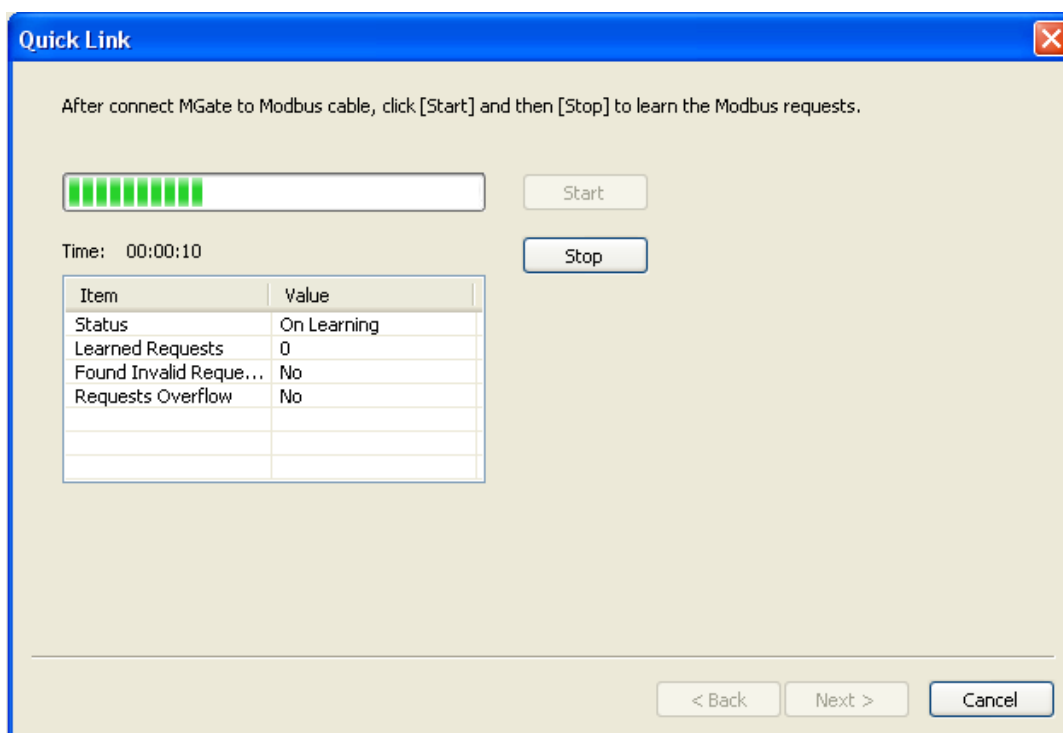


It takes some time to learn the Modbus requests. Begin by clicking the Start button, which will change the status to On Learning. The number of Learned Requests will increase as the MGate 4101-MB-PBS learns each request. When you are sure all the requests have been learned by the MGate 4101-MB-PBS, click the Stop button, then click the Next button to continue QuickLink.



NOTE

QuickLink function will work correctly only when all the serial parameter settings are set correctly.



The interface of the next dialogue box is divided into two sections. The upper section is labeled Modbus and will display the details of the Modbus requests which have been learned by the MGate 4101-MB-PBS. The lower section is labeled PROFIBUS Slave and will display the I/O module. Moreover, based on these learned requests, the I/O module blocks are allocated intelligently by MGate Manager. To complete the process, click the Finish button to make the settings work.

Quick Link

Recommended IO settings for Modbus and PROFIBUS.

Modbus (Read/Write:1/0 bytes)

ID	Enable	Slave ID	Function	Address	Length	Internal Address	Poll Interval	Swap
<01>	Cyclic	1	1	0	1	0	1000	None

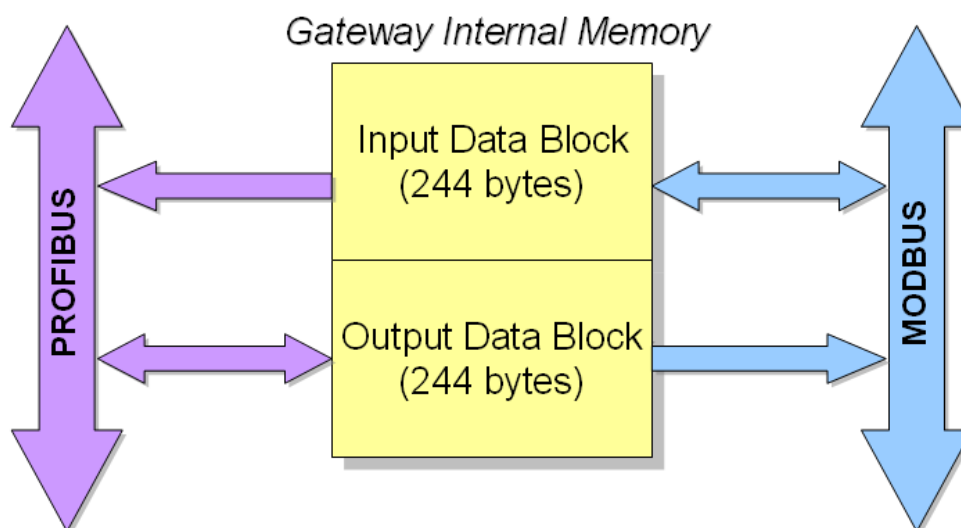
PROFIBUS Slave (Input/Output:1/0 bytes)[Paging:Disable]

ID	I/O Module	Configuration ID	Internal Address
[01]	Input:1 byte	0x10	0

< Back Finish Cancel

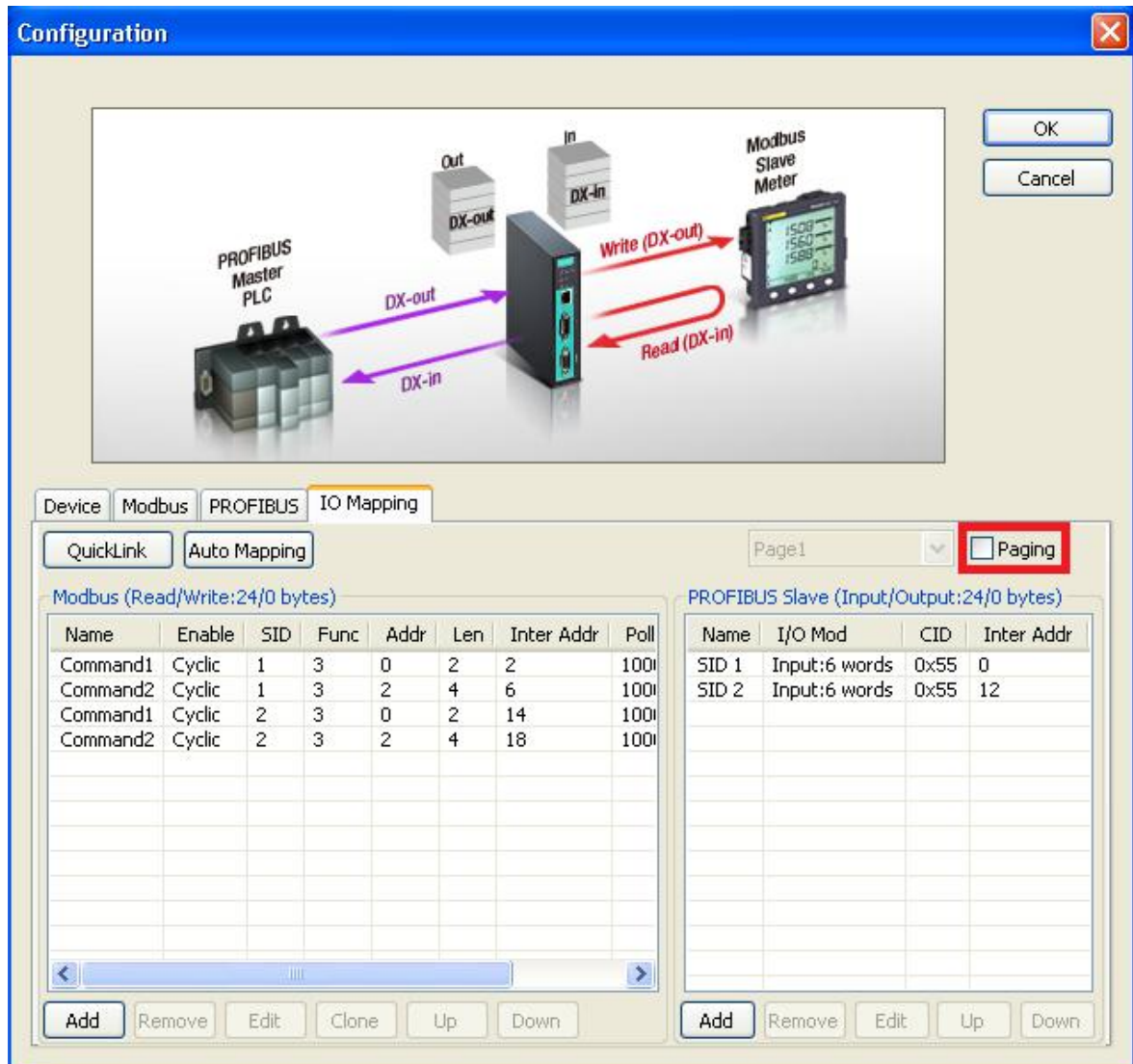
Paging

Gateway internal memory is divided into two blocks. The input memory address starts from 0x00000, and the out memory starts from 0x40000. The following picture shows the memory structure. Each page contains 244 bytes.



Input refers to the dataflow from the Modbus device to the PROFIBUS master. It means the gateway will read the Modbus device's data and store in its input memory area. And the PROFIBUS master will read these Modbus data stored at the gateway's input memory. Users can choose an internal memory address between 0 to 224.

Output refers to the dataflow from the PROFIBUS master to the Modbus devices. The PROFIBUS data that are being written to the Modbus device will be stored at the gateway's output memory area, and then the Modbus device will write those data stored at the gateway's output memory area. Users can choose the internal memory address between 40000 to 40242.



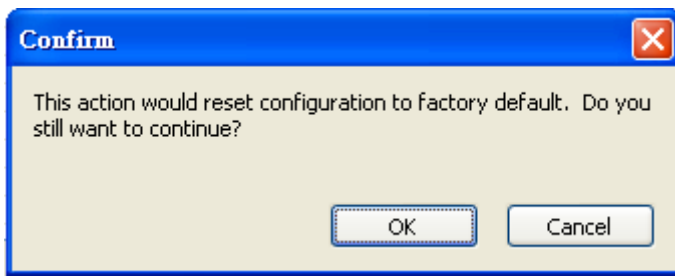
If you want to exchange data over 244 bytes, you can select the **Paging** checkbox to enable the page function, so the utility will insert two I/O word modules into the starting location of the input/output memory bank for separate page functionality. Basically, because one I/O module supports 244 bytes only, the paging function can be used to break through this limit. The maximum of input/output memory size is up to 7744 bytes respectively.

[illegible]

If for some reason you would like to clear all the settings of the unit, the **Load Default** button will reset the unit to its initial factory default values.



If you are sure you would like to reset the configuration to the factory default, click the **OK** button. If not, click **Cancel**.



After MGate Manager resets completely, it will automatically execute a Broadcast Search for all MGate units on the LAN and the recording COM port. Your MGate should reappear in the list of units.

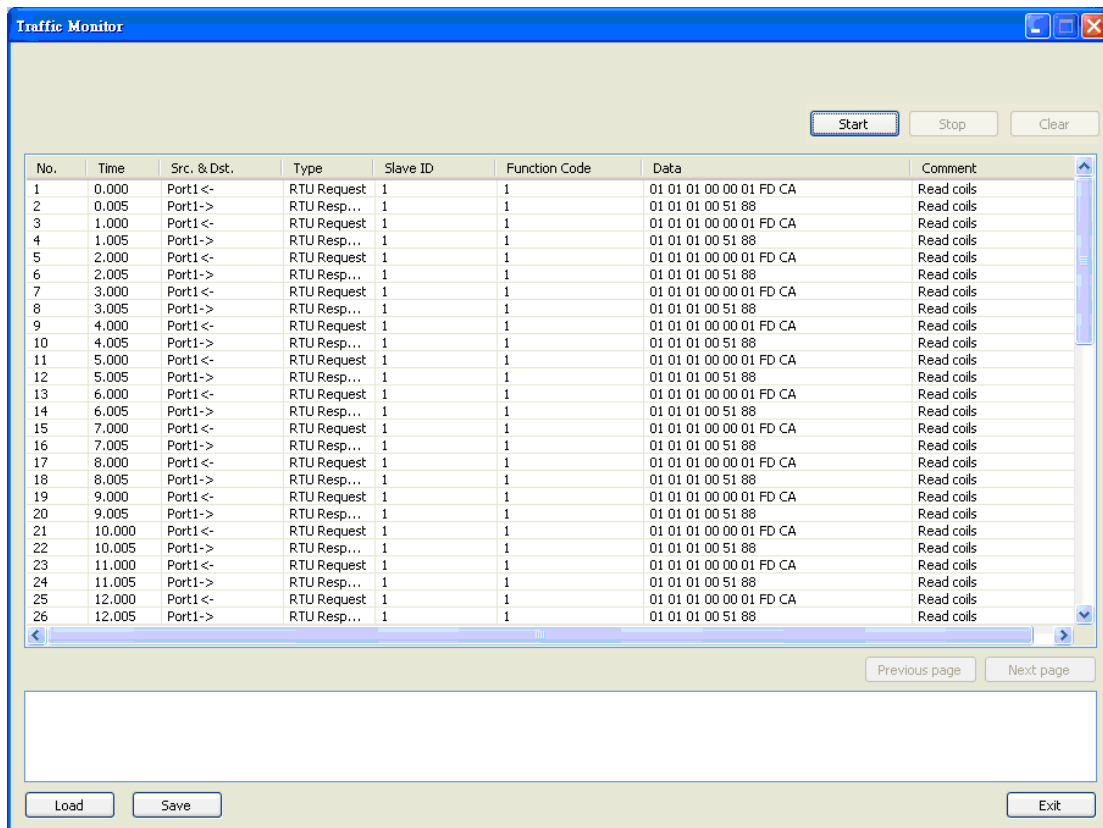


ATTENTION

Load Default will completely reset the configuration of the unit, and all the parameters you have saved will be discarded. Do not use this function unless you are sure you want to completely reset your unit.

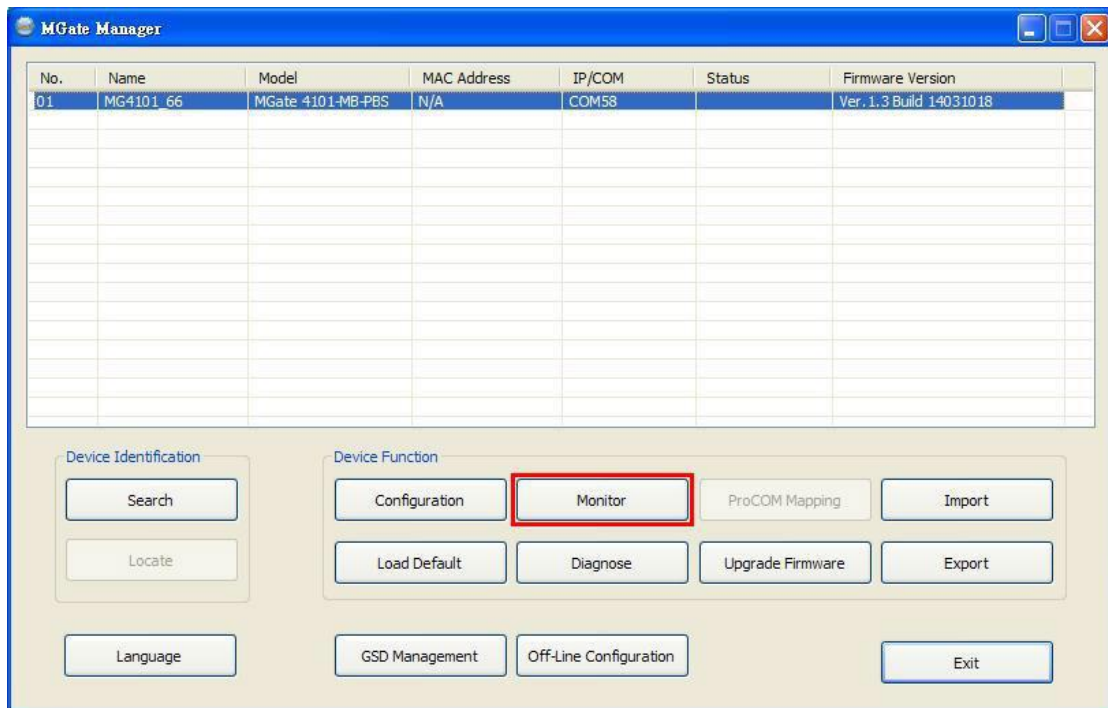
Monitoring Modbus Activity

For troubleshooting or management purposes, you can monitor the data passing through any MGate 4101-MB-PBS on the Modbus side. Data events will be logged as they pass through the gateway. Rather than simply echoing the data, MGate Manager presents the data in an intelligent, easily understood format, with clearly designated fields including source, type, destination, contents, and more. Events can be filtered in different ways, and the complete log can be saved to a file for later analysis.

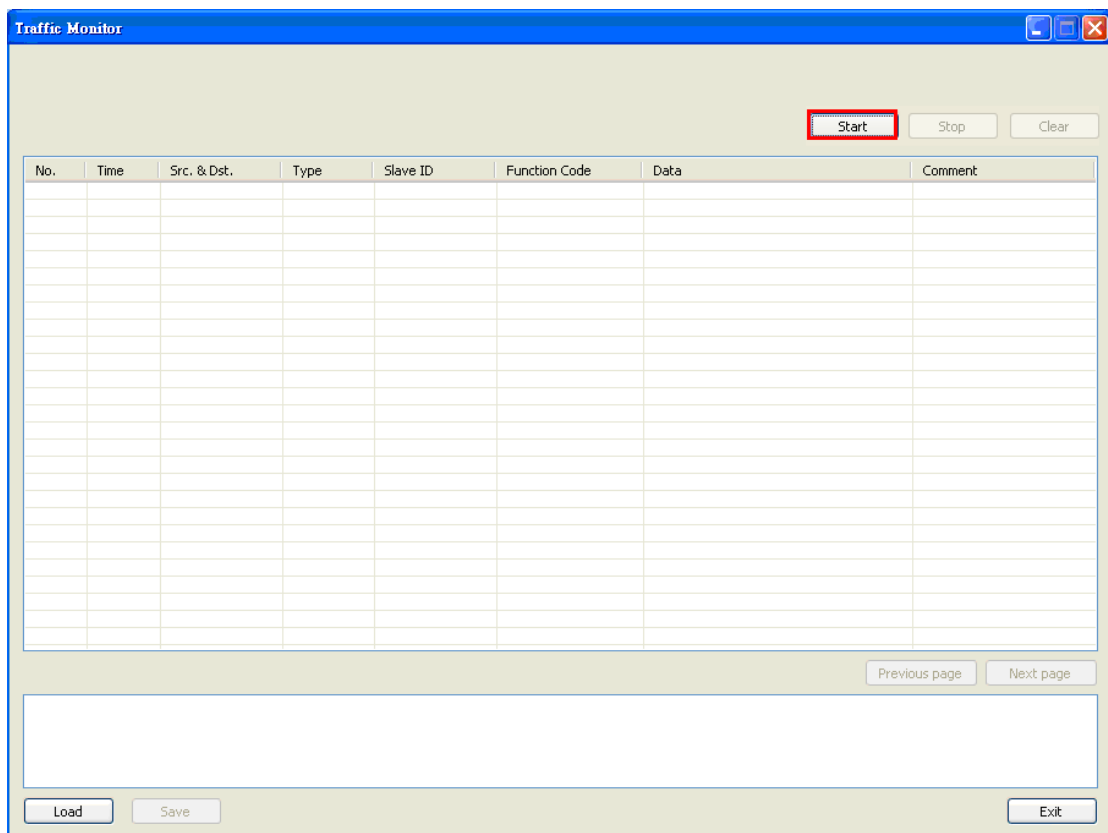


Open Traffic Monitor Window

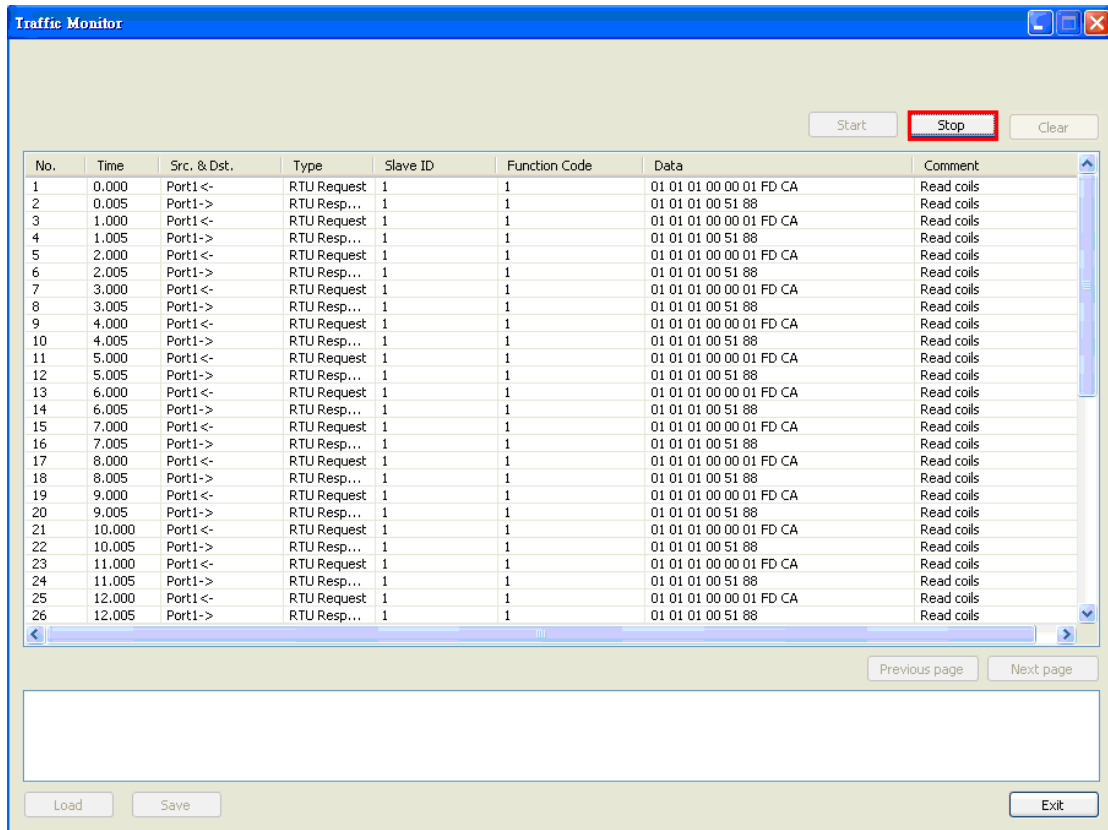
Select the unit that you wish to monitor and click **Monitor** to open the Traffic Monitor window.



In the Traffic Monitor window, click **Start** to begin live monitoring of the data passing through the selected MGate 4101-MB-PBS unit.

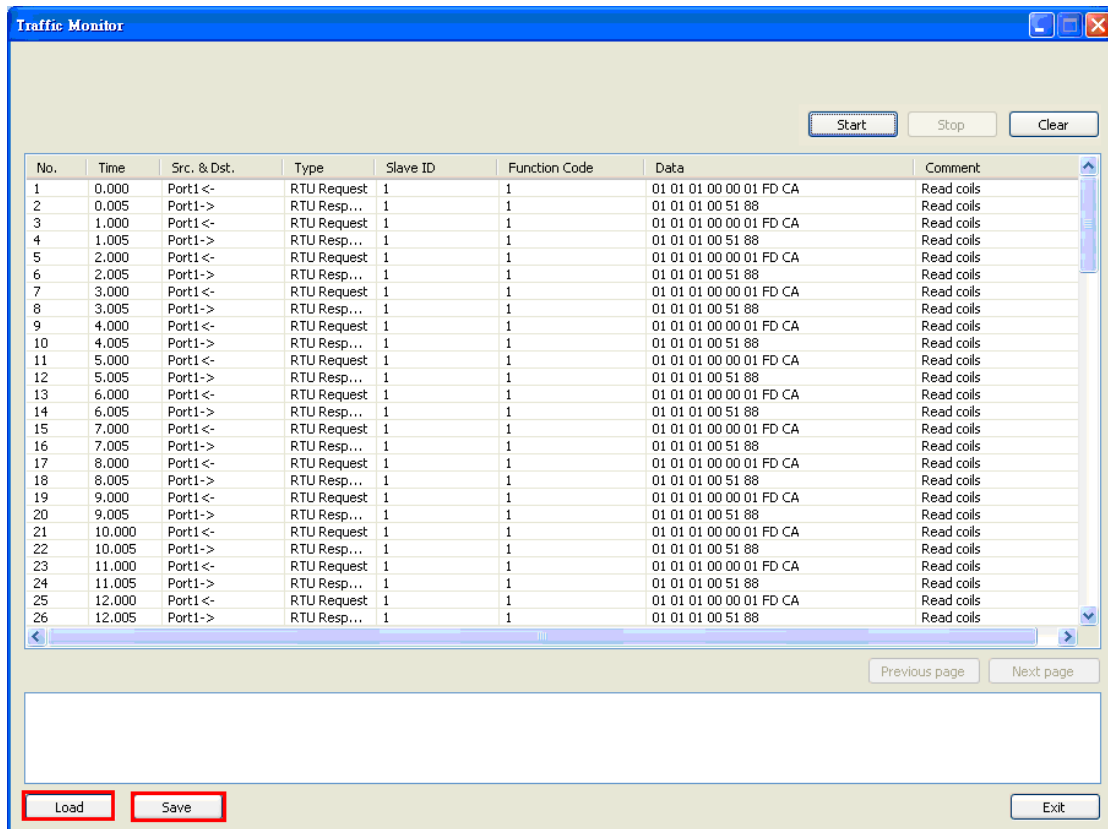


To stop capturing the log, press the **Stop** button.



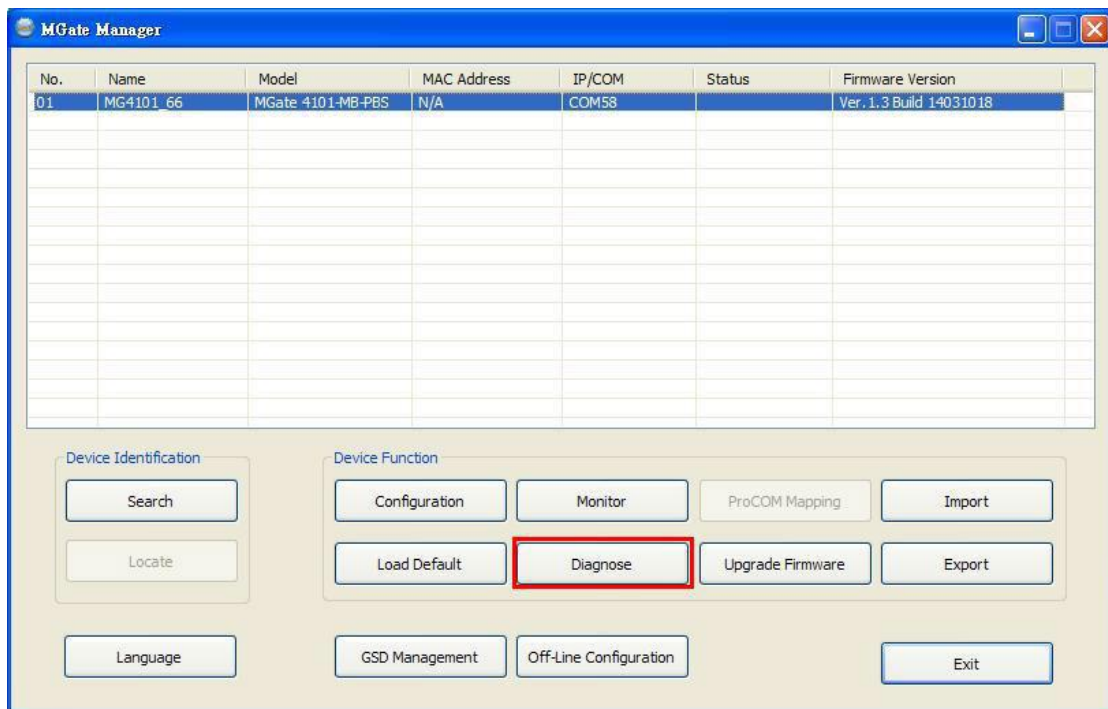
Save Log to File

To save the data log to a file, click **Save**. You may retrieve a saved log by clicking **Load**.



Diagnose

Diagnose is a powerful function to identify communications problems and help troubleshoot when setting up a PROFIBUS and Modbus environment. Select the desired unit from the list in MGate Manager and click **Diagnose** to check the communication status.



The dialog box will show the details of the communication status of Modbus, PROFIBUS, and I/O Data View. In addition, it contains serial parameters.

Category	Item	Value
Modbus	State	Running
	Type	RTU Master
	Valid Requests	4593
	Exception	0
	Timeout	102
	CRC/LRC Error	5
	Invalid Requests	0
Serial Port	Port Number	1
	Interface	RS485 2-wire
	Settings	19200,None,8,2
	TX	45270
	RX	33728
	Break	0
	Frame Error	0
	Parity Error	0
	Overrun Error	0

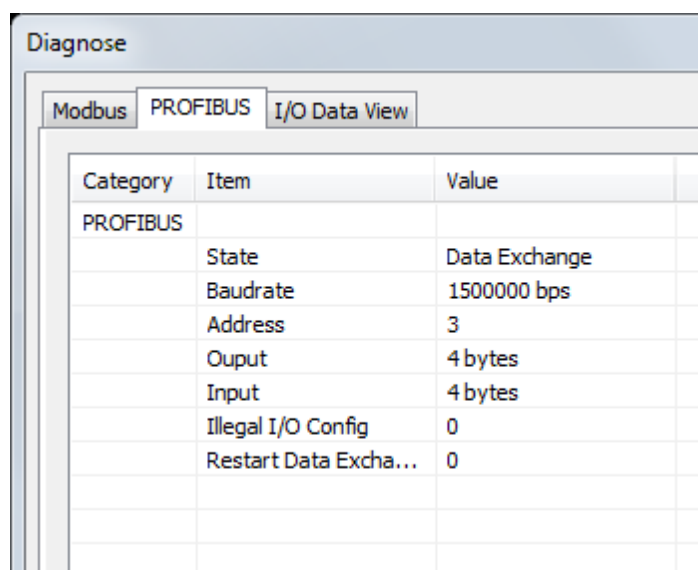
There are two parts. In Modbus tab, the first part is the information regarding Modbus. These details will help you analyze the Modbus communication.

Modbus	Description
State	The communication state of Modbus side
Type	RTU Slave / RTU Master / ASCII Slave / ASCII Master
Slave ID	The Slave ID for Modbus
Valid Requests	The number of valid requests
Exception	The number of exceptions
Time-out	The number of time-outs
CRC/LRC Error	The number of CRC/LRC errors
Invalid Requests	The number of invalid requests

The second part is the serial parameters. It includes the serial communication about this serial port

Serial Port	Description
Port Number	The serial port number
Interface	The serial interface, RS-232/RS-422/RS-485-2w/RS-485-4w
Settings	The parameter includes baudrate, parity, start bit and stop bit, for example, 19200, None, 8, 1
Tx	The transmission count
Rx	The reception count
Break	The number of break signals
Frame Error	The number of frame errors
Parity Error	The number of parity errors
Overrun Error	The number of overrun errors

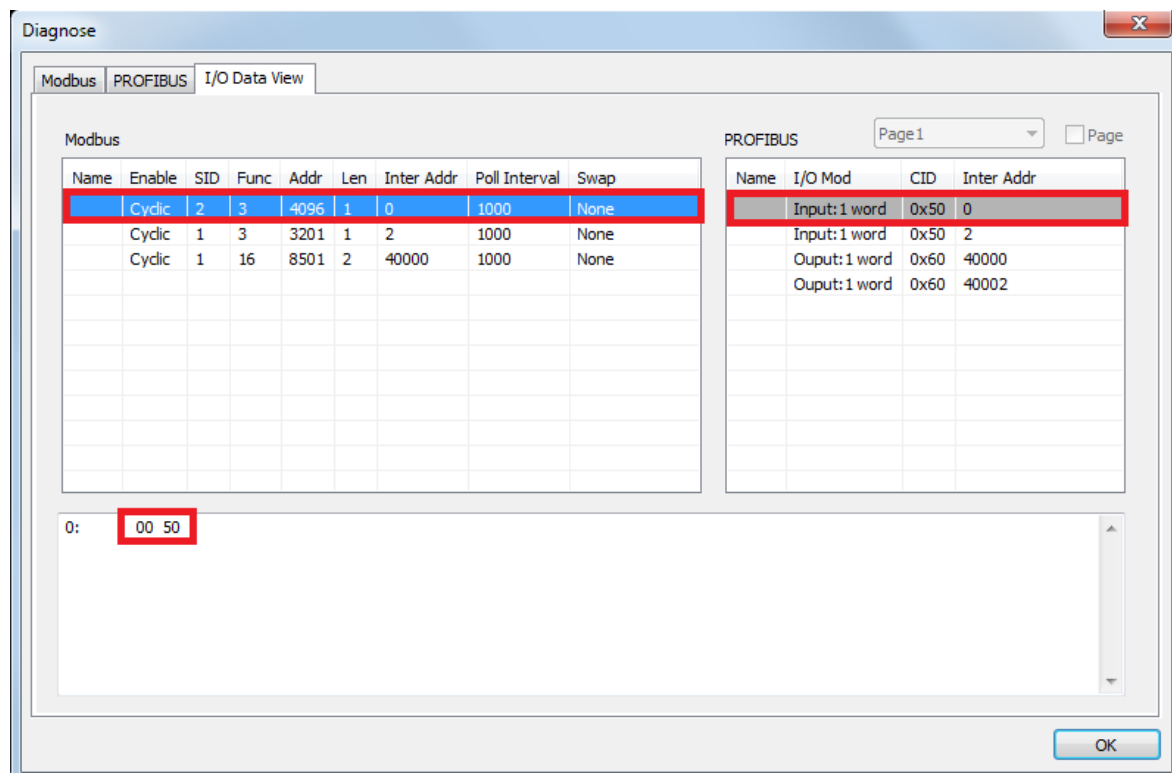
The PROFIBUS tab has information about the PROFIBUS status



Category	Item	Value
PROFIBUS	State	Data Exchange
	Baudrate	1500000 bps
	Address	3
	Output	4 bytes
	Input	4 bytes
	Illegal I/O Config	0
	Restart Data Excha...	0

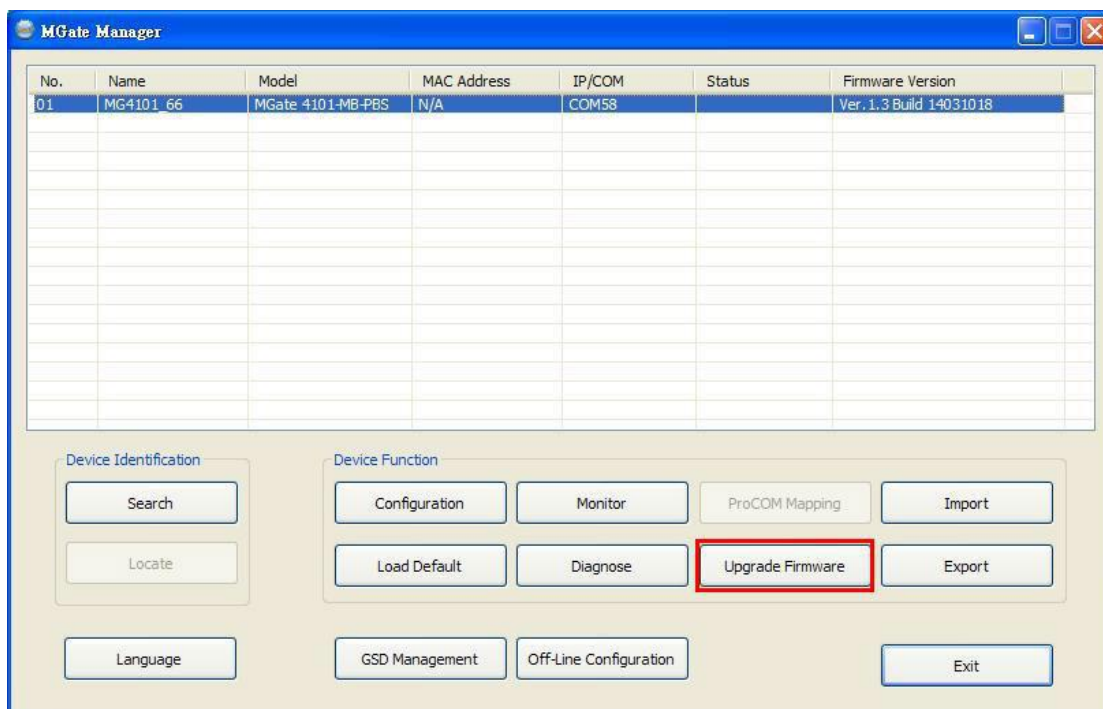
PROFIBUS	Description
State	The communication state of PROFIBUS side
Baudrate	The baudrate of PROFIBUS side
Address	The PROFIBUS segment ID
Output	The output bytes
Input	The input bytes
Illegal I/O Config	The number of illegal I/O configurations
Restart Data Exchange	The number of restarted data exchanges

The I/O Data View tab checks all exchanging data in MGate's internal memory. Select **PROFIBUS I/O module/Modbus** command to get the correct data.

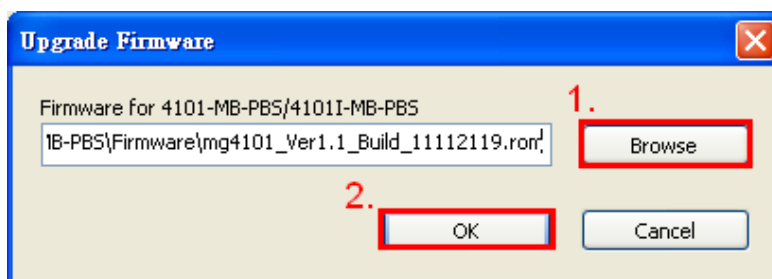


Upgrading Firmware

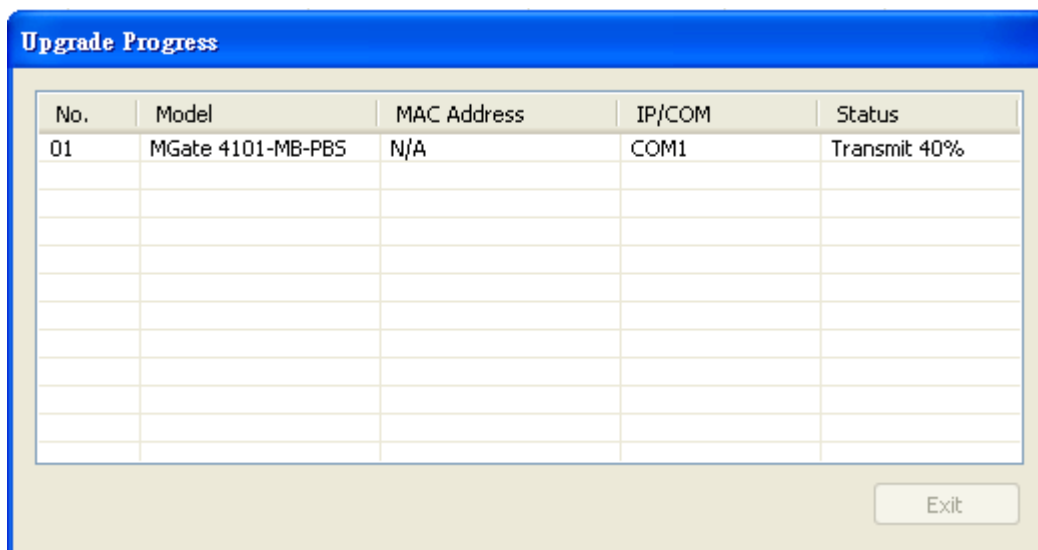
Firmware updates for the MGate 4101-MB-PBS are at www.moxa.com. After you have downloaded the new firmware onto your PC, you can use MGate Manager to write it onto your MGate 4101-MB-PBS. Select the desired unit from the list in MGate Manager and click **Upgrade Firmware** to begin the process.



The dialog boxes will guide you through the process. You will need to browse your PC for the firmware file. Make sure that it matches your model.



As the firmware is written to the unit, progress is displayed in the window.



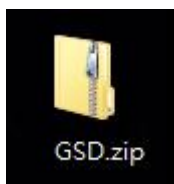
Once the firmware has been successfully written onto the unit, click **Exit** to close the Upgrade Firmware window. MGate Manager will automatically execute a Broadcast Search for all MGate units on the LAN and the recording COM port. Your MGate should reappear in the list of units.

Import/Export

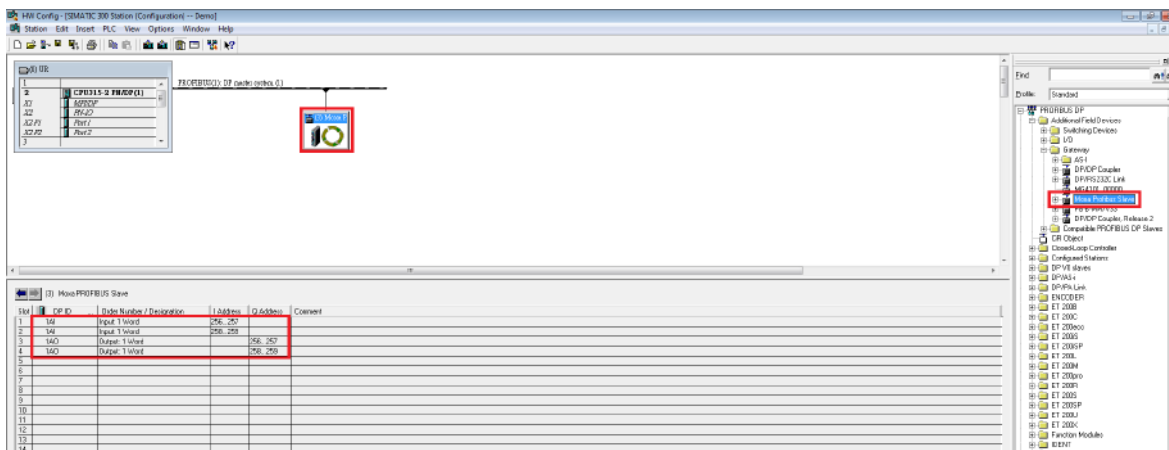
The Import/Export configuration function is a convenient way to apply the same settings to units which are at different sites. You can export the configuration as a file, and then import that configuration file onto other units at any time.

The export function saves all the configuration settings and parameters of the MGate 4101-MB-PBS will be saved in an .INI file format. Furthermore, you also can save a GSD file with all I/O module settings in a .zip file.

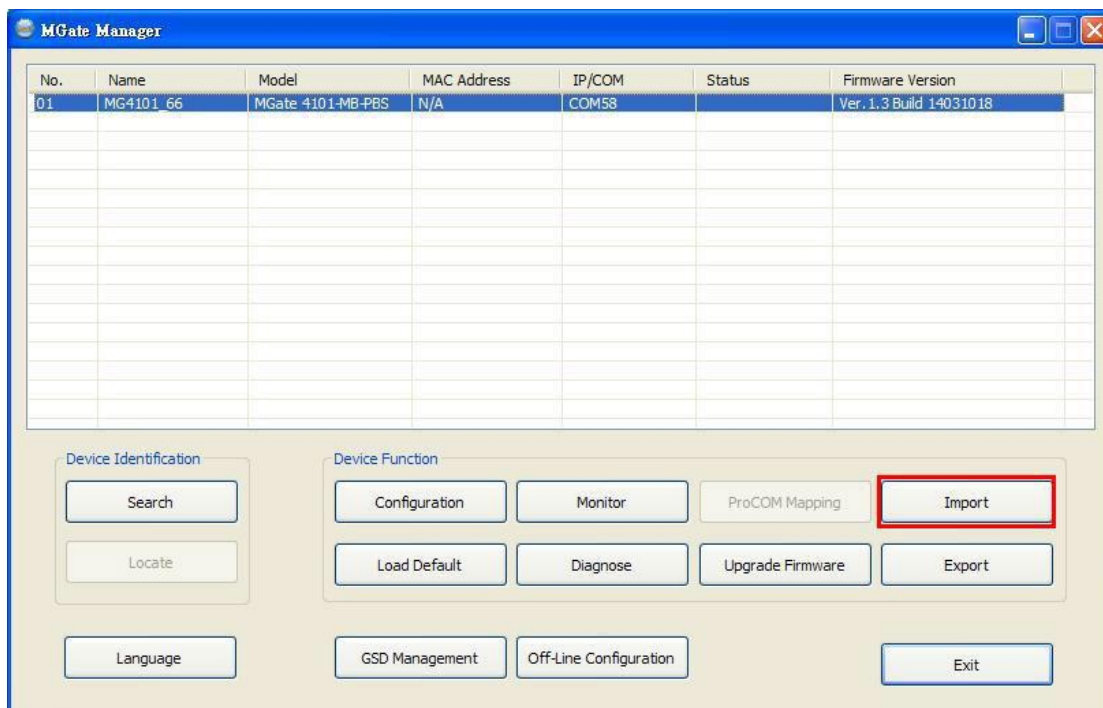
The GSD file will be saved as a .zip file.



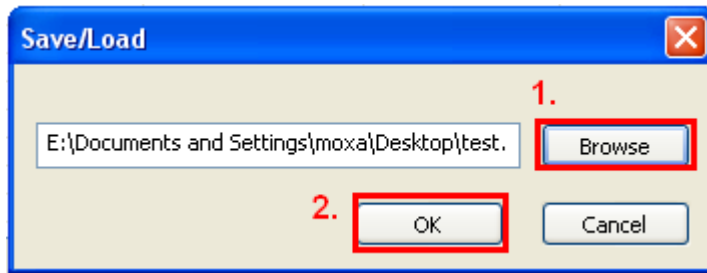
The exported GSD file is used for easy configuration when setting PLC. Typically, users waste lots of time in importing MGate 4101 general GSD files and then set the I/O modules respectively. If we import the specified GSD coming from MGate 4101, a user just needs to pull the module to the PROFIBUS system. Then the I/O modules will be set and you can run the communication. It is an easy and efficient way in PLC configuration.



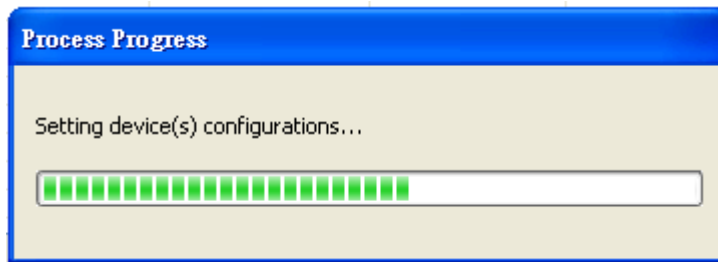
Once the file is saved, it can be imported into your target unit to duplicate the same settings. Select the target unit first and click the **Import** button to import.



Select the file you want to import, then click the **OK** button



Please be patient and wait as MGate Manager configures the target device.



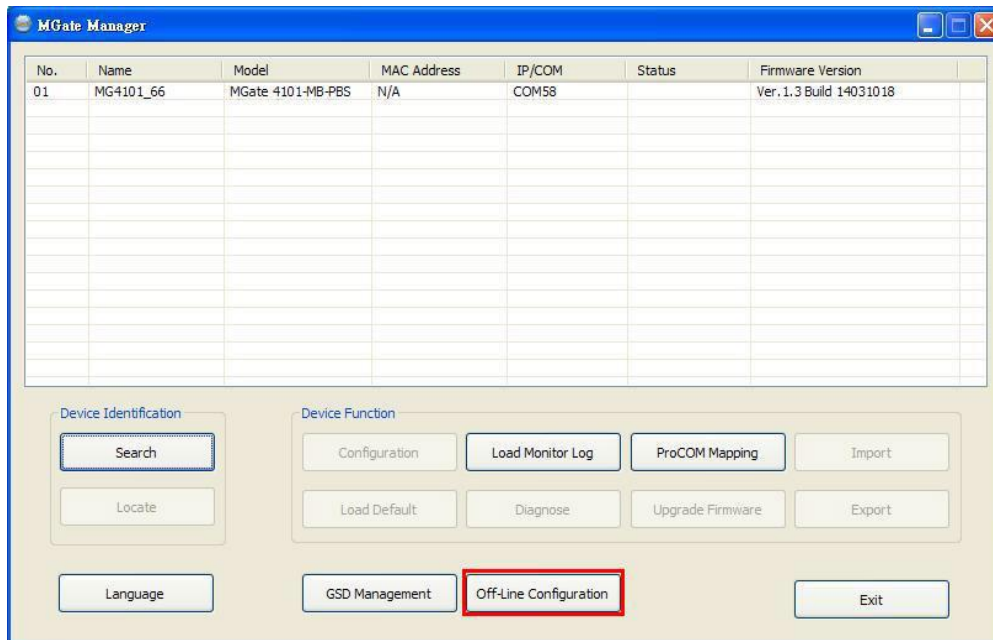
If you import the configuration file successfully, a confirmation message will pop up.



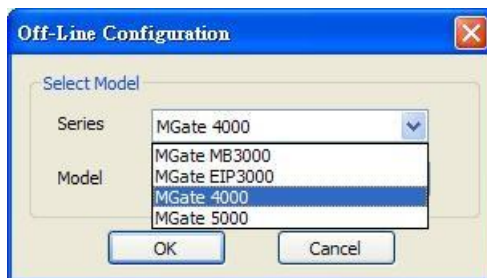
After closing the message dialog box, MGate Manager will automatically execute a Broadcast Search for all MGate units on the LAN and the recording COM port. Your MGate should reappear in the list of units.

Off-Line Configuration

Users can create or modify the configuration file manually through MGate Manager. To use this function, users can click on the **Off-Line Configuration** button to load the configuration window.



A dialog box will appear. Choose the correct model and series. Click the **OK** button for the desired MGate device to proceed to the next step.

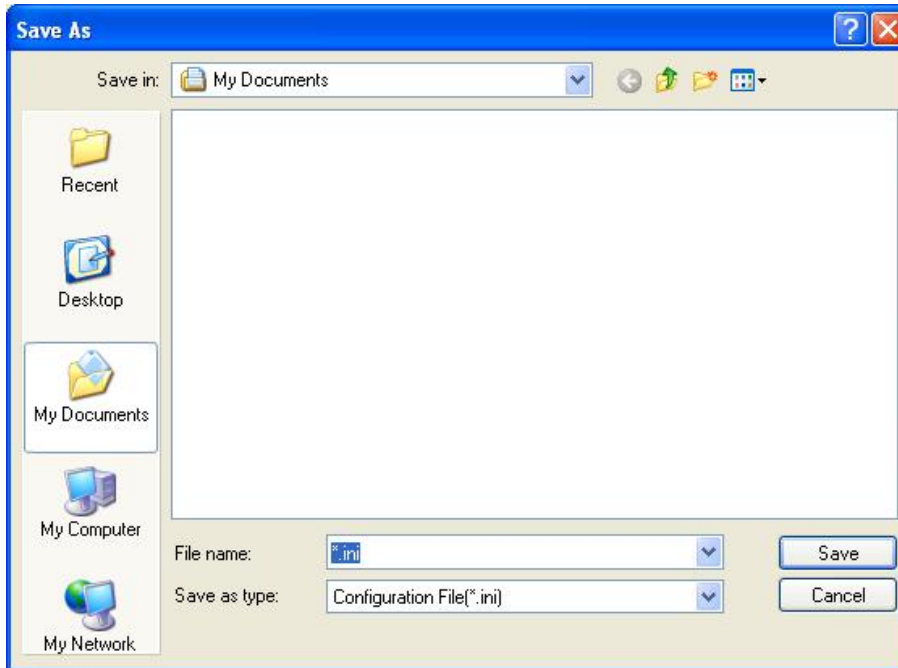


Users can choose “Create new configuration” or “Load existing configuration” to create or modify configurations.



By choosing “create new configuration,” users can set each functions as an online setting. Refer to the **Modifying the Configuration** section for detailed information. When all configurations are finished, click **OK** to update or store the configuration file.

A dialog box to store the configuration file as *.INI file is displayed.

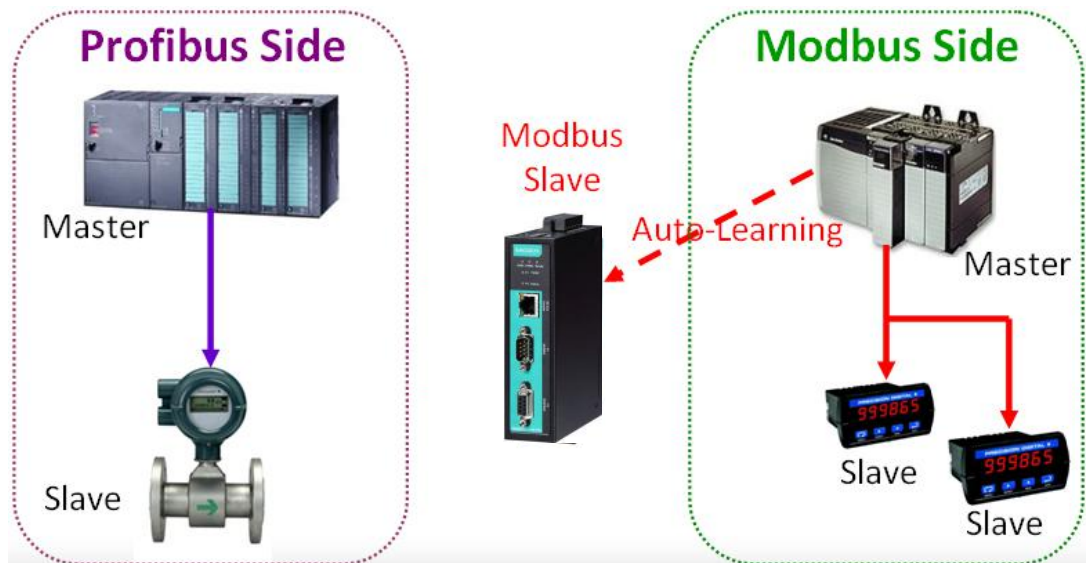


The file for "Load existing configuration" can be generated from the **Export** function, or loaded from the file stored when "Create new configuration."

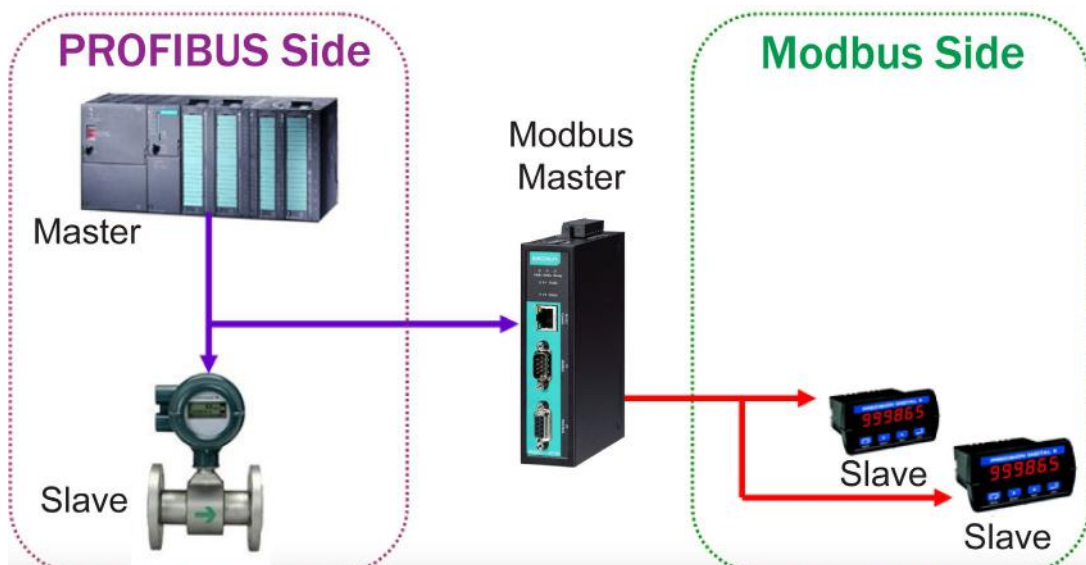
A. Quick Configuration

Typical Applications

Here is a typical application to show how to use the **Quick Link** function and explain how QuickLink works. First, we are assuming a legacy Modbus client/master is in the original application, and the Modbus client/master is running. After MGate 4101-MB-PBS connects to the Modbus client/master, the MGate 4101-MB-PBS acts as a Modbus server/slave to learn Modbus requests from the client/master automatically.



After some time, MGate 4101-MB-PBS will fully learn the requests from the Modbus client/master. Through this QuickLink process, the MGate 4101-MB-PBS can replace the legacy Modbus client/master. Moreover, the MGate 4101-MB-PBS can respond to all the Modbus servers/slaves correctly.





NOTE

QuickLink is enabled with the MGate 4101-MB-PBS is in master mode only. Please set the MGate 4101-MB-PBS in master mode before you use the QuickLink function.

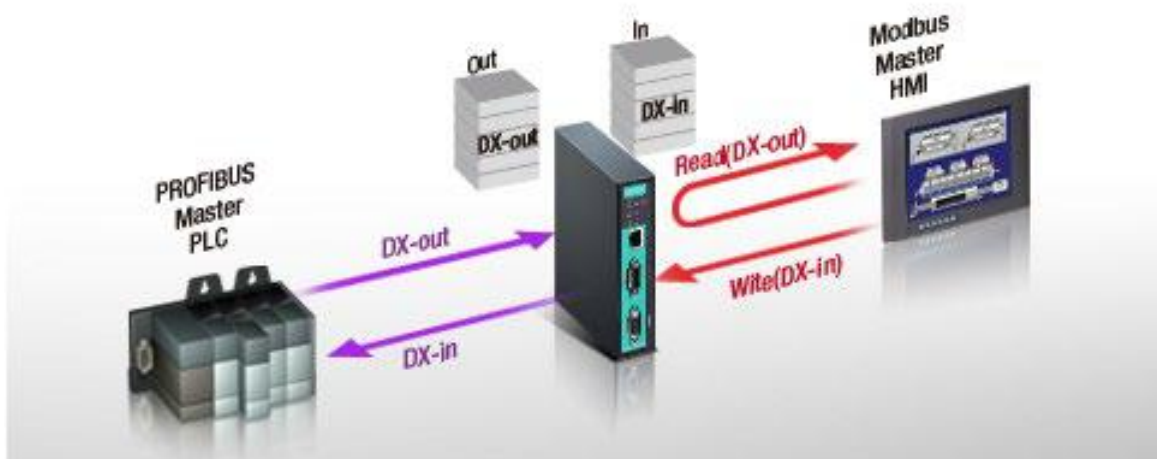
Quick Configuration Steps

MGate 4101-MB-PBS provides an innovative function which can automatically and quickly finish the configuration. Two typical architectures are illustrated below. Confirm which architecture is used in your application and then follow the steps to finish the configuration.

MGate 4101 is Modbus Client/Master



MGate 4101 is Modbus Server/Slave



PROFIBUS Overview

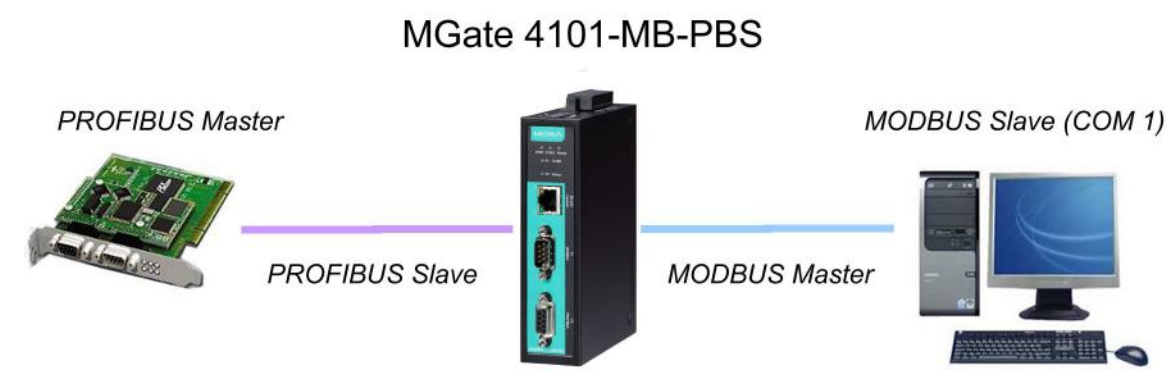
Introduction

PROFIBUS (Process Field Bus) is a standard for fieldbus communication in automation technology and was first promoted in 1989 by BMBF (German department of education and research).

Topology

PROFIBUS uses the bus topology. In this topology, a central line, or bus, is wired throughout the system. Devices are attached to this central bus. One bus eliminates the need for a full-length line going from the central controller to each individual device.

In the past, each PROFIBUS device had to connect directly to the central bus. Technological advancements, however, have made it possible for a new “two-wire” system. In this way, multiple PROFIBUS buses can connect to each other.



Modbus Overview

Introduction

Modbus is one of the most popular automation protocols in the world. It supports both serial and Ethernet devices. Many industrial devices, such as PLCs, DCSs, HMIs, instruments, meters, motors, and drivers, use Modbus as their communication standard.

Devices are Either Clients/Masters or Servers/Slaves

All Modbus devices are classified as either a client/master or a server/slave. Client/Masters initiate all communication with server/slave and do not communicate with other clients/masters. Servers/Slaves are completely passive and communicate only by sending a response to a client/master's request.



Slaves are Identified by ID

Each Modbus server/slave in a system is assigned a unique ID between 1 and 247. Whenever a client/master makes a request, the request must include the ID of the intended recipient. Client/Master devices themselves have no ID.

0	1~247	248~255
Broadcast address	Server/Slave individual address	Reserved

Communication is by Request and Response

All Modbus communication is by request and response. A client/master sends a request, and a server/slave sends a response. The client/master will wait for the server/slave's response before sending the next request. For broadcast commands, no response is expected. This is illustrated by the following scenarios:

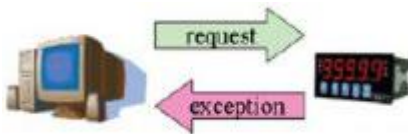
Normal

The client/master sends a request to the server/slave. The server/slave responds with the requested information.



Exception

The client/master sends a request to the server/slave. The server/slave may not support the command or an error is detected, so it sends an exception to the client/master.



Broadcast

The client/master sends a broadcast command, such as a reset command. Every server/slave on the network complies with the command, and no response is sent to the client/master.



Requests Need a Time Limit

The original Modbus protocol was not designed for simultaneous requests, so only one request on the network can be handled at a time. When a client/master sends a request to a server/slave, no other communication may be initiated until after the server/slave responds. The Modbus protocol specifies that clients/masters use a response timeout function to identify when a server/slave is nonresponsive because of device or line failure. This function allows a client/master to give up on a request if no response is received within a certain amount of time. This is illustrated as follows:

Response Timeout

The client/master sends a request. The server/slave is unresponsive for the time specified by the response timeout function. The client/master gives up on the request and resumes operation, allowing another request to be started.



To allow for a wide range of devices, baudrates, and line conditions, actual response timeout values are left open for manufacturers to determine. This allows the Modbus protocol to accommodate a wide range of devices and systems. However, this also makes it difficult for system integrators to know what response timeout value to use during configuration, especially with older or proprietary devices.

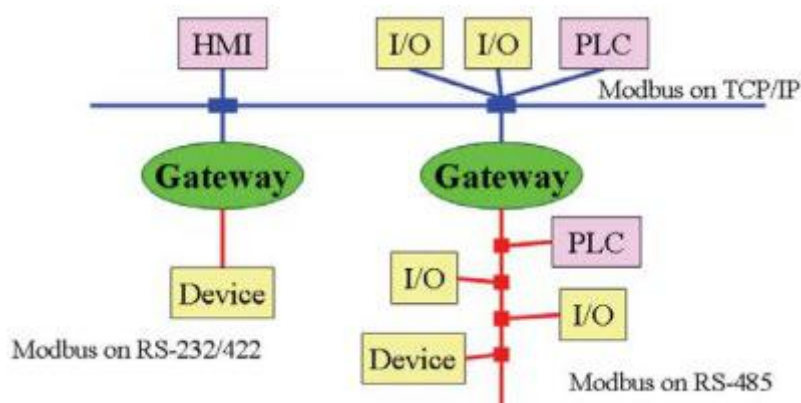
The MGate MB3000 provides a patent-pending function that tests all attached devices and recommends a response timeout value. This function saves considerable time and effort for system integrators, and it results in more accurate timeout settings.

Modbus Ethernet vs. Modbus Serial

Although Modbus is intended as an application layer messaging protocol, the data format, and communication rules for Ethernet-based Modbus TCP differ from serial-based Modbus ASCII and RTU.

The major difference between the Ethernet and serial Modbus protocols is the behavior of the communication model. Modbus ASCII and RTU allow only one request on the network at a time. Once a request is sent, no other communication on the bus is allowed until the server/slave sends a response, or until the request times out. However, Modbus TCP allows simultaneous requests on the network, from multiple clients/masters to multiple servers/slaves. TCP clients/masters cannot send more than one request at a time to a server/slave, but they can send requests to other servers/slaves before a response is received. The Modbus TCP standard recommends that servers/slaves be able to queue up to 16 requests at a time. The MGate MB3000 will queue up to 32 requests from each TCP client/master, for up to 16 TCP clients/masters.

Integrate Modbus Serial and Ethernet with Gateways



Ordinarily, Modbus TCP and Modbus ASCII/RTU cannot communicate with each other.

However, with a Modbus gateway in between the Modbus serial network and the Modbus Ethernet network, TCP clients/masters can communicate with serial servers/slaves and serial clients/masters can communicate with TCP servers/slaves.

Diagnose Packet Format

When the communication of MGate works well between PROFIBUS and Modbus protocols, MGate won't go into diagnostic mode. However, if there is an error in the Modbus connection, for example, a disconnection or no responses, the MGate will continue to send polling requests until three requests are sent without response. Then, it will enter diagnostic mode. In this mode, the MGate will send diagnose packets periodically. Upon receiving the correct response, MGate will go back to normal operations.

Refer to the diagnose packet format table to help identify why the MGate entered diagnostic mode.

Byte	Parameter	Notes
1	Length	The length of diagnose packet
2	Page number	The paging number which the problem data locates
3	Module	The PROFIBUS IO module number, which the problem data locates

For instance, if the diagnose packet is 03 01 03, that means the problem data is on the third PROFIBUS IO module on page one. Using this information, you can check if the location of the internal memory is correct.